



Yemen: A Focus on Resilience in a Time of Crisis



What is resilience? For USAID, resilience to recurrent crisis is the ability of people, households, communities, countries, and systems to mitigate, adapt to, and recover from shocks and stresses in a manner that reduces chronic vulnerability and facilitates inclusive growth.



Situation in Yemen

One of the poorest and least developed countries in the world – ranking 154th out of 182 countries on the UN Human Development Index.

Half the population lives in poverty with 80 percent located in rural areas where health and nutrition indicators rank among the lowest in the world.

The country's poor resource base cannot meet the needs of a population that is growing steadily, doubling every 20 years, this coupled with low productivity and the shocks of internal conflict create a crisis situation.



Resilience Programming

Focus is on the most vulnerable population where poverty, climatic stresses, and chronic malnutrition intersect.

Goal is to promote adaptive capacity, increase the ability of these populations to address shocks and improve social and economic conditions.

Key transitional mechanism is using humanitarian assistance in conjunction with sustainable development programming to create to enterprise models that are sustainable



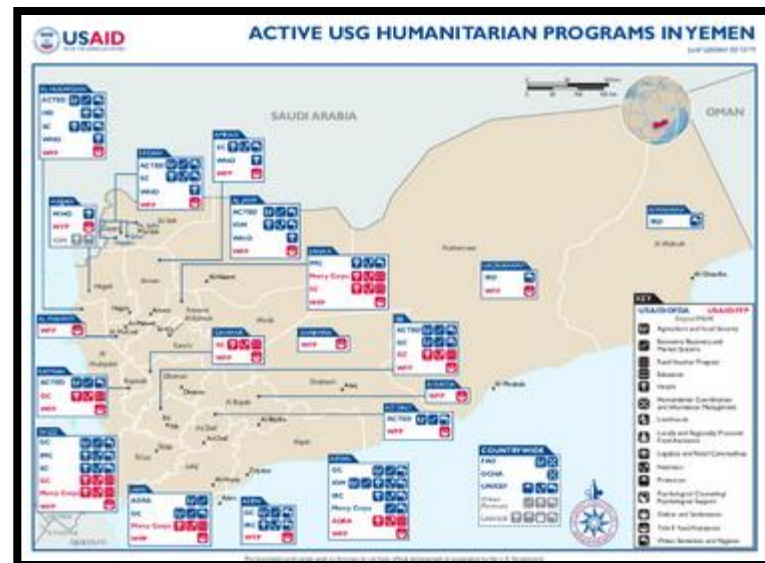
Humanitarian Assistance

Focus on support quick-impact employment and small-scale community infrastructure rehabilitation projects to respond to the needs of communities affected by the economic downturn and conflict.

Assistance will support sustained engagement between government and community representatives, ensuring the activity ultimately helps to build a new, constructive relationship and improve government responsiveness.

HUMANITARIAN FUNDING TO YEMEN IN FY 2014 & FY 2015*

USAID/OFDA	\$41,290,932
USAID/FFP	\$70,000,000
State/PRM	\$8,900,000
Total U.S. Government Assistance to Yemen	\$120,190,932





Agriculture & Economic Growth

Feed the Future Agriculture - Focus on high value agriculture products with support to increase productivity, quality and market access.

Economic Development - Focus on improving access to credit through improved legal and regulatory framework for financial services, and development of productive workforce through targeted vocational training.



CASH Project Horticulture Demo Sites

Location/ Sites	Sana'a	Taiz	IBB	Dhamar	Raymah
Women owned Nurseries	I	I	I	I	I
Location :	Bait Al-Shatibi-Sanhan District 15°12'52.44" N 44°19'10.56" E	Al-Hayat Women Association – Al-Ma'afer District 13°27'10.75" N 43°58'41.93" E	Rebat Al-Qala'ah – Yareem District 14°12'8.64" N 44°20'17.36"E	Rusabah District 14°47'40.27" N 44°19'3.17" E	Juairah - Al-Salafiah District 14°40'5.14" N 43°53'45.38" E
Type and size	Plastic Greenhouse (373.5)M2	Plastic Greenhouse (373.5)M2	Plastic Greenhouse (373.5)M2	Plastic Greenhouse (373.5)M2	Plastic Greenhouse (373.5)M2
Capacity	200000 seedlings per season	200000 seedlings	200000 seedlings	200000 seedlings	200000 seedlings
Full Accessories	Yes	Yes	Yes	Yes	Yes
Name of the association/Beneficiaries	Mr. Kamal Al-Se'elah	Al-Hayat Women Association	Al-Rif Agricultural Women Association	Ms. Helia Ali Muthana	Horiah Ahmed
Number of Beneficiaries	Direct: 35 Indirect: 250	Direct: 30 Indirect: 400	Direct: 30 Indirect: 530	Direct: 25 Indirect: 720	Direct: 30 Indirect: 150
Men owned Nurseries	I	I	I	I	I
Location	Al-Gaheliah – Hamdan/Arhab District 15°30'37.88"N 44°10'15.54"E	Al-Ma'afer district Al-Nashmah area 13°22'53.64" N 43°58'19.44" E	Mafrag Jiblah-Jiblah District 13°55'53.95"N 44°10'9.84" E	Ma'aber District 14°47'40.27" N 44°19'3.17" E	Fyhan Al-Dwmar Al-Salafiah District 14°39'57.54" N 43°53'43.49" E
Type and size	Plastic Greenhouse (373.5)M2	Plastic Greenhouse (373.5)M2	Plastic Greenhouse (373.5)M2	Plastic Greenhouse (373.5)M2	Plastic Greenhouse (373.5)M2
Capacity	200000 seedlings	200000 seedlings per season	200000 seedlings per season	200000 seedlings per season	200000 seedlings per season
Full Accessories	Yes	Yes	Yes	Yes	Yes
Name of the association/Beneficiaries	Al-Gaheliah	Mr. Faress Abdo Ali	Mr. Bakil Ahmed	Mr. Saroub Abdullah Saroub	Mohmed Ahmed Al-Ashshah
Number of Beneficiaries	Direct: 25 Indirect: 320	Direct: 25 Indirect: 120	Direct: 25 Indirect: 250	Direct: 25 Indirect: 920	Direct: 25 Indirect: 330



FewsNet

USAID is supporting a multi-year work plan led by FewsNet to assess conditions in Yemen, identify critical geographic areas, and project various scenarios.

Specifically, FewsNet will:

- **Identify soil, climatic and water conditions that could impact ongoing humanitarian assistance efforts;**
- **Provide specific information on water availability and its potential for agriculture production; and**
- **Project climatic and rainfall scenarios to support Mission planning for humanitarian assistance and sustainable development programs.**



Challenges

Instability & Lack of Security - Increasing instability limits ability of partners to effectively implement programs and to respond to opportunities to create synergy.

Limited Funding – Yemen ranks almost last in per capita funding in the Middle East North Africa (MENA) region for USG assistance based on FY 2014 USG assistance levels (at \$3.23 per capita funding Yemen beats only Algeria, Morocco, Libya & Saudi Arabia – there are 9 other MENA countries that receive more per capita support than Yemen does from the US).



Overarching Issues

Coordination - There is need for management to engage in a forcing function – implementing partners need to work well together – stop holding up their own flags and look for opportunities to integrate and tease out synergies.

Timing/Sequencing - There is also the challenge of timing and sequencing efforts across partners and sector programs. Collective and cooperative planning/mapping is essential – breaking down the barriers of implementing partner focus/expertise is also important.

Culture Change - The Humanitarians need to work together with the Development focused longer term programmers. Organization need to breakdown silos internally and across organizations.



Opportunities

Voucher Program for Food Aid - Humanitarian Assistance assistance will support quick-impact employment and small-scale community infrastructure rehabilitation projects to respond to the needs of communities and support sustained engagement between government and community representatives to build new, constructive relationship and improve government responsiveness.

Coffee to Resilience Program – Coffee marketing initiative to link food insecure communities to high value coffee buyers and expand access for Yemen coffee in “social cause market” sector of US. Program will seek to partner with one or more humanitarian assistance partners and execute pilot marketing effort in one or more major export coffee markets.



USAID | **YEMEN**
FROM THE AMERICAN PEOPLE

Questions?