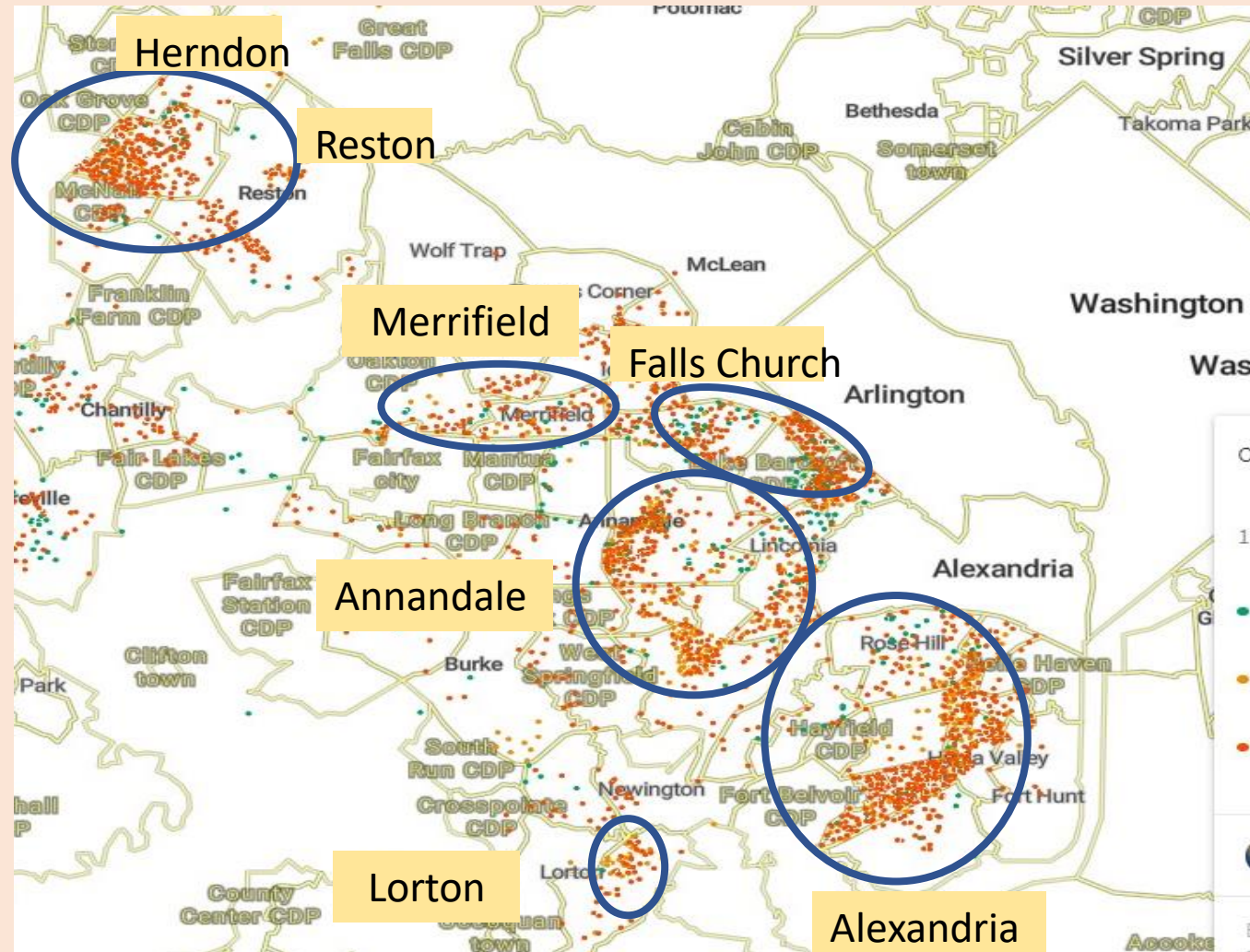


Helping Fairfax County Virginia Public Schools Support Unaccompanied Children from the Northern Triangle

Helping local government leaders understand that there are refugee children in our communities and the schools they attend may need additional support from public and private organizations.

See our analysis and the schools we believe need additional support in Fairfax County



Northern Triangle Origin Residents in Fairfax County Virginia

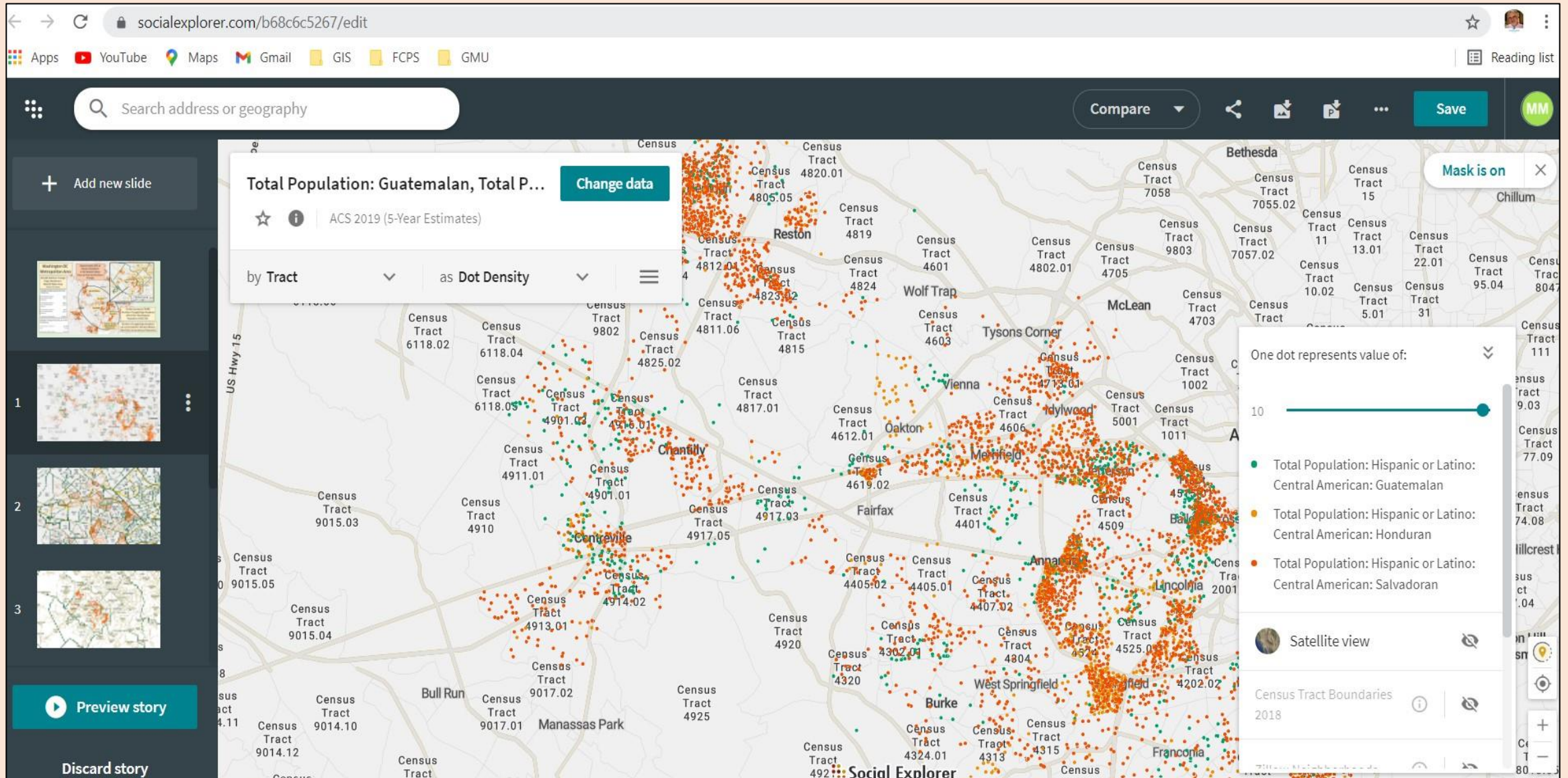
Fairfax County Public Schools (FCPS)

Region 1 – Herndon & Reston

Region 2 – Merrifield, Falls Church & Annandale

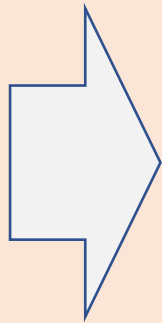
Region 3 – Alexandria

Social Explorer – <http://www.socialexplorer.com>



Five Step Process for GIS Analysis

1. Frame the question to be answered.
2. Explore and prepare the data.
3. Choose analysis methods and tools.
4. Perform analysis.
5. Examine and refine results.



Key Questions

Where are Northern Triangle origin refugee children located in Fairfax County, VA?
What public schools are they most likely attending?
What public and private social services are available to help them thrive?

Data Sources

Northern Triangle Origin Population & Unaccompanied Children Data
American Community Survey 2019 (5 Year Estimates) U.S. Census
Fairfax County Government & Public School Systems Data
Private & Public Assistance Organizations Active in Fairfax County

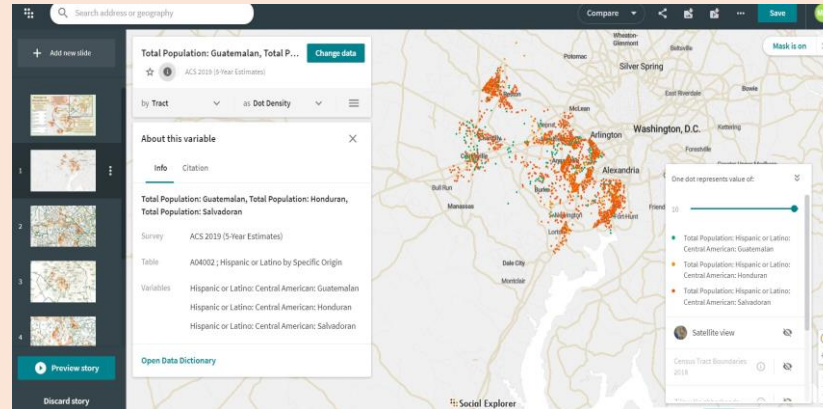
Data Analysis & Tools

Using Social Explorer (<http://www.socialexplorer.com>) query of US Census Data to locate Northern Triangle origin residents by census tract in Fairfax County, VA.

Tools: Masking tool to show only output results for Fairfax County, Layer tool to show census boundaries to and results at local level, Geo-processing tool to map schools as a layer in Northern Triangle origin resident communities, and Fairfax County Public School data to provide summary tables listing the schools in high density Northern Triangle origin communities with over 40% Hispanic enrollment.

Methods & Data

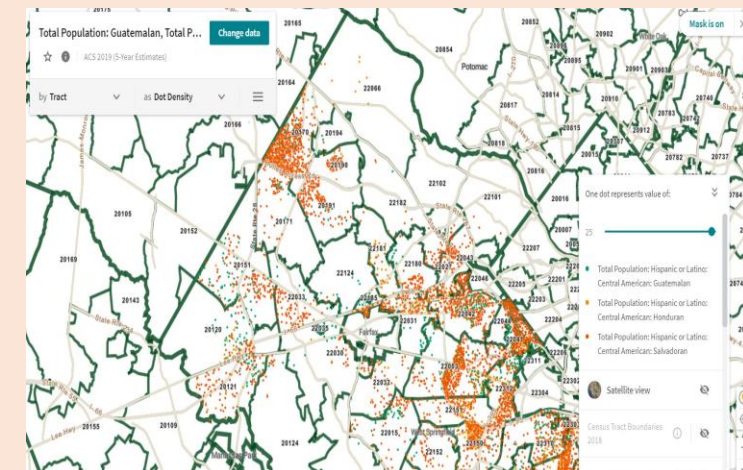
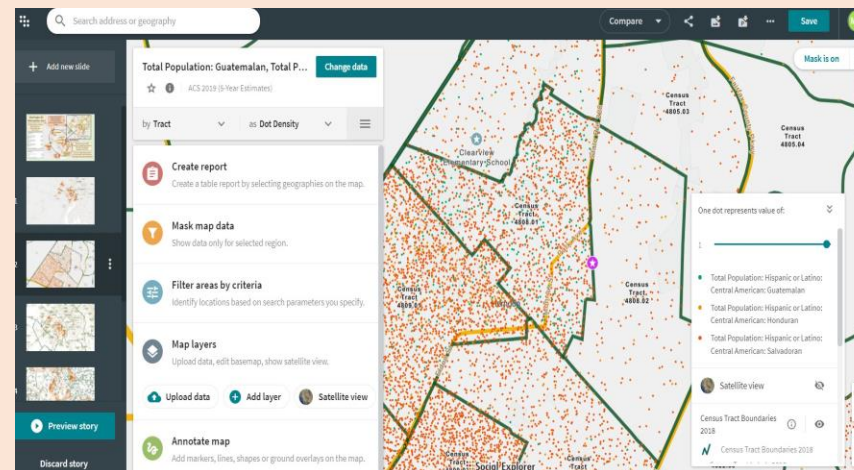
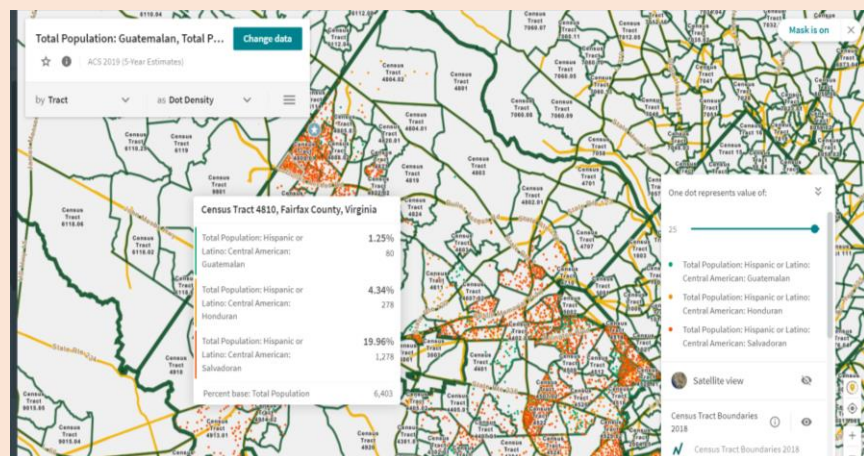
1. Description of methods, software & sequence of analysis.



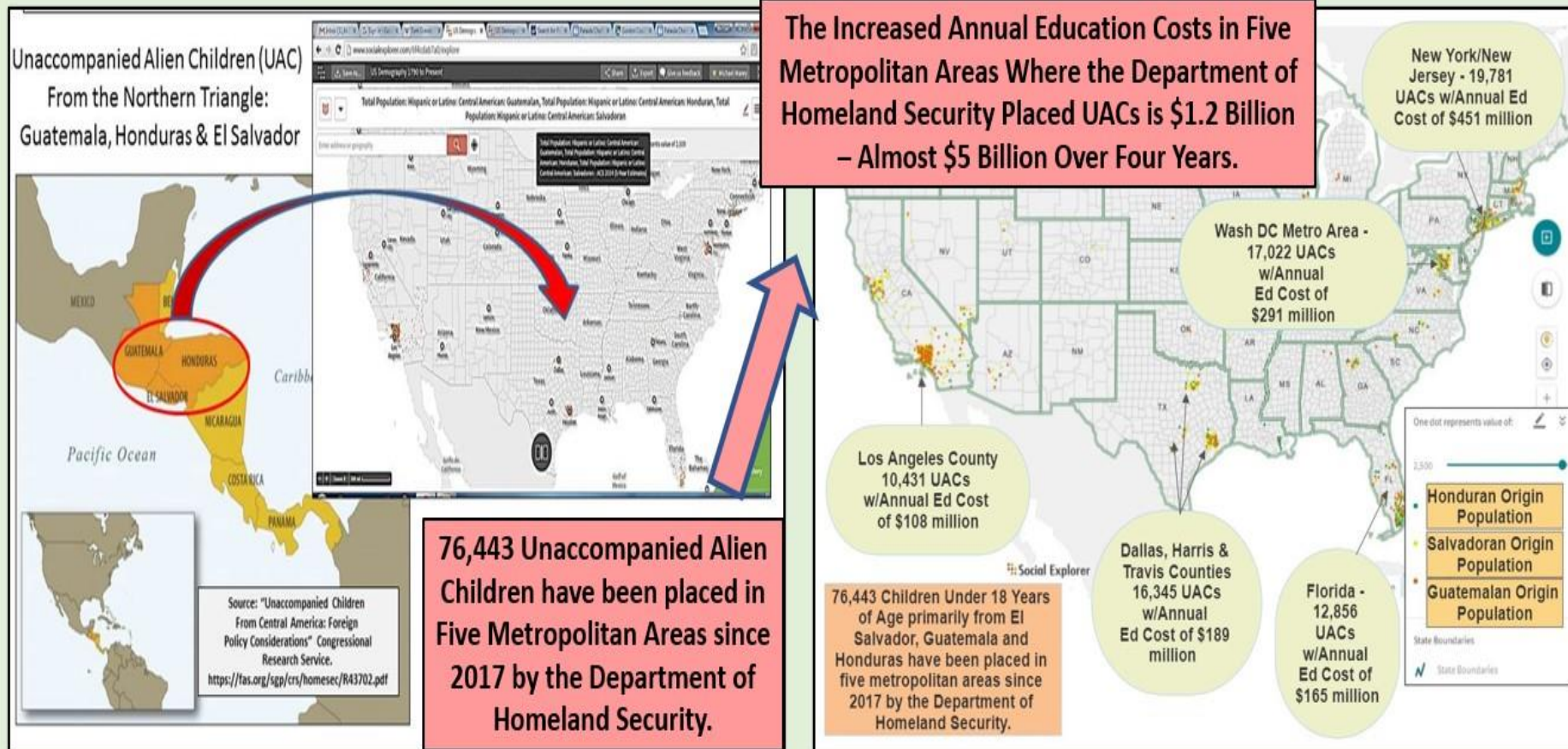
2. How this will answer the questions.

3. Methods & GIS techniques used to process the data.

4. GIS layers needed to achieve objectives.



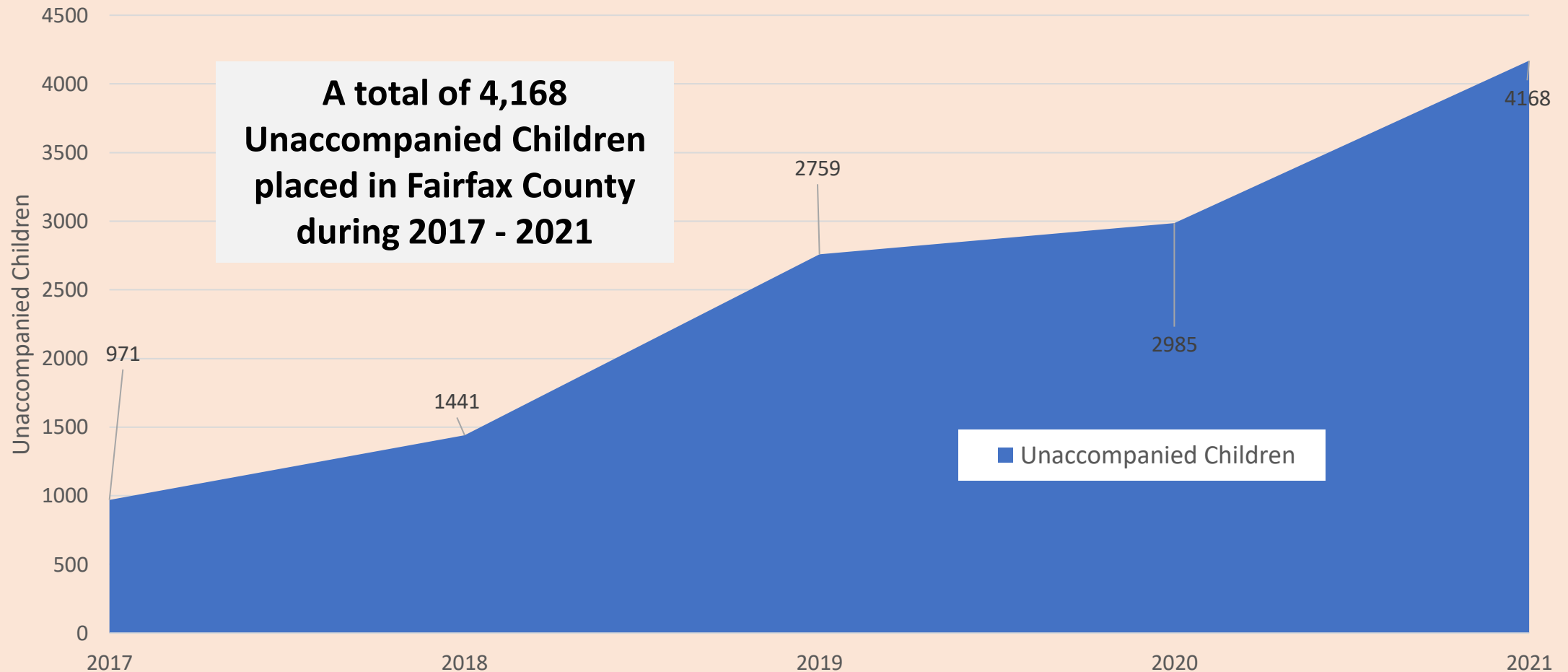
Over 76,000 Unaccompanied Children Placed in U.S. Communities during 2017 - 2021



Unaccompanied Children Placed in Fairfax County Virginia: 2017 - 2021

Office of Refugee Resettlement, Dept. of Homeland Security
FY2017 – FY2021

Source: <https://www.hhs.gov/programs/social-services/unaccompanied-children-released-to-sponsors-by-county-september-2020.h>



Washington DC Metropolitan Area

452,295 Northern Triangle Origin Residents in WashDC Metro Area
Source: US Census

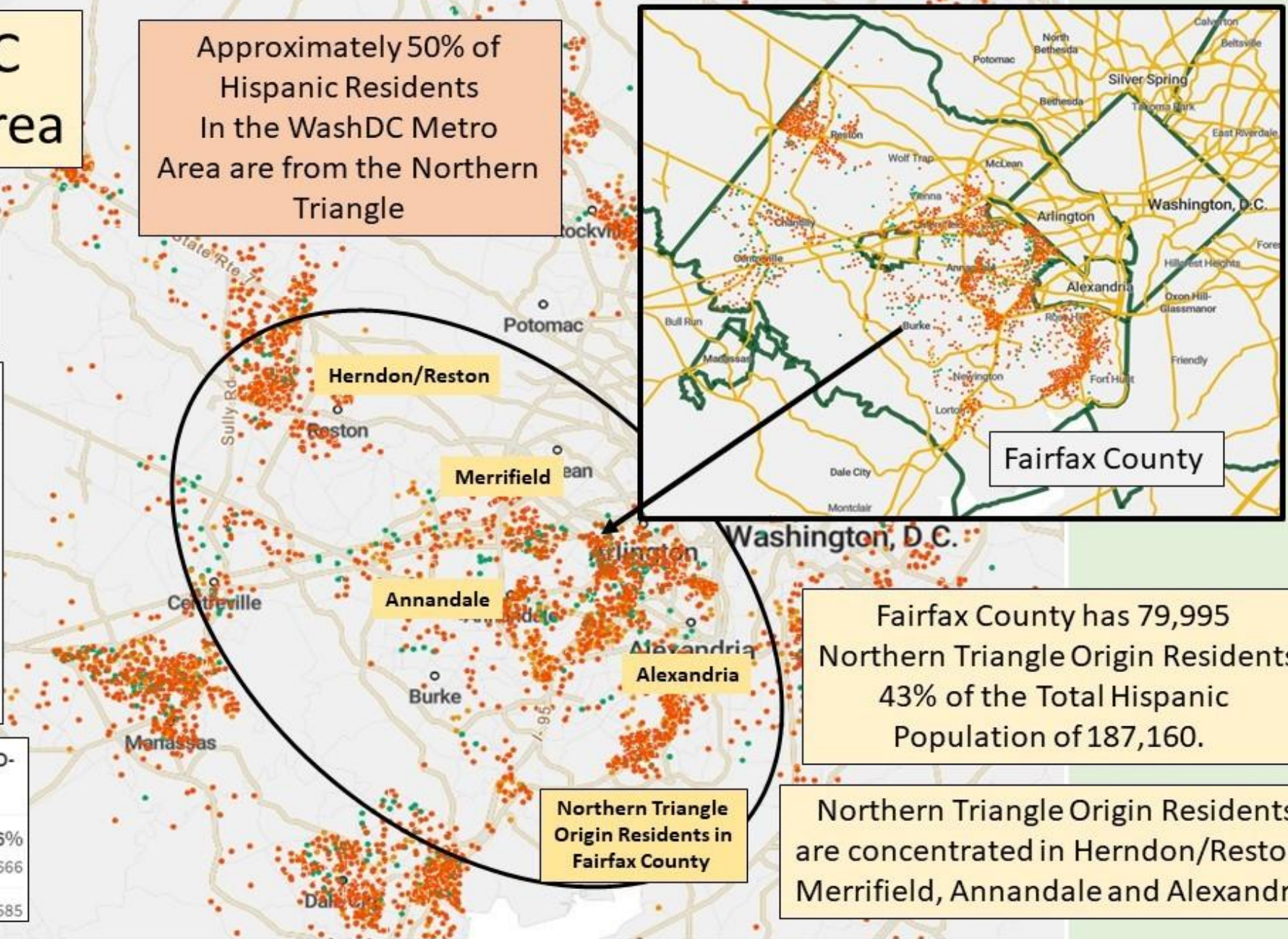
Washington-Arlington-Alexandria, DC-VA-MD-WV Metro Area

| | |
|--|-----------|
| Total Population: Hispanic or Latino: Central American: Guatemalan | 1.21% |
| Total Population: Hispanic or Latino: Central American: Honduran | 74,876 |
| Total Population: Hispanic or Latino: Central American: Salvadoran | 5.1% |
| Percent base: Total Population | 316,184 |
| | 6,196,585 |

Washington-Arlington-Alexandria, DC-VA-MD-WV Metro Area

| | |
|--------------------------------------|-----------|
| Total Population: Hispanic or Latino | 15.76% |
| Percent base: Total Population | 976,666 |
| | 6,196,585 |

Approximately 50% of Hispanic Residents In the WashDC Metro Area are from the Northern Triangle



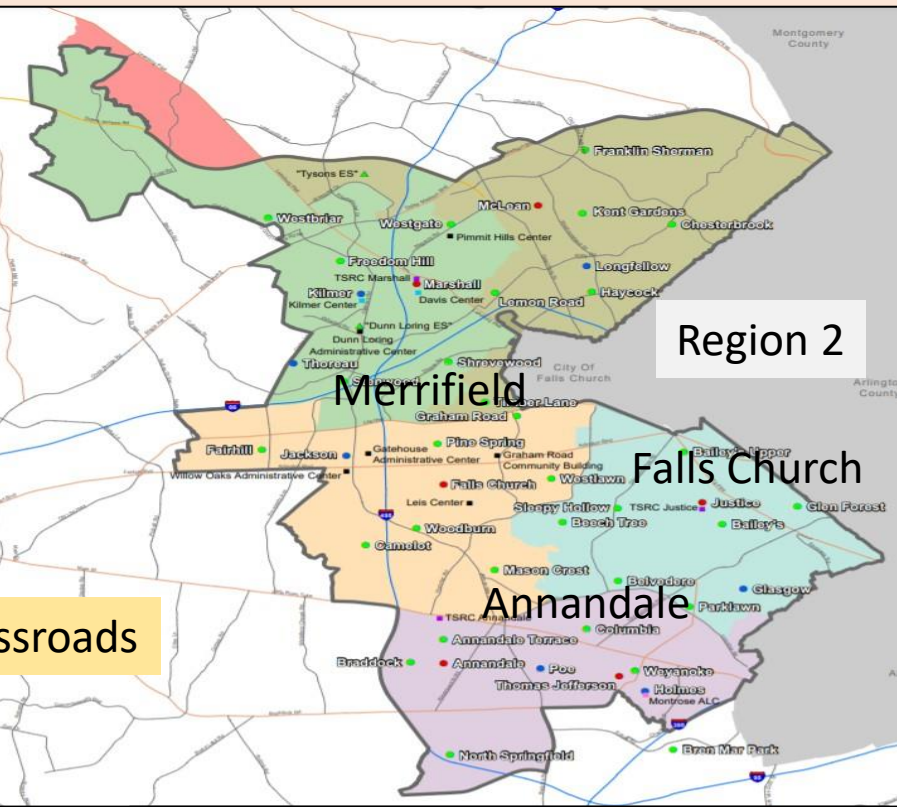
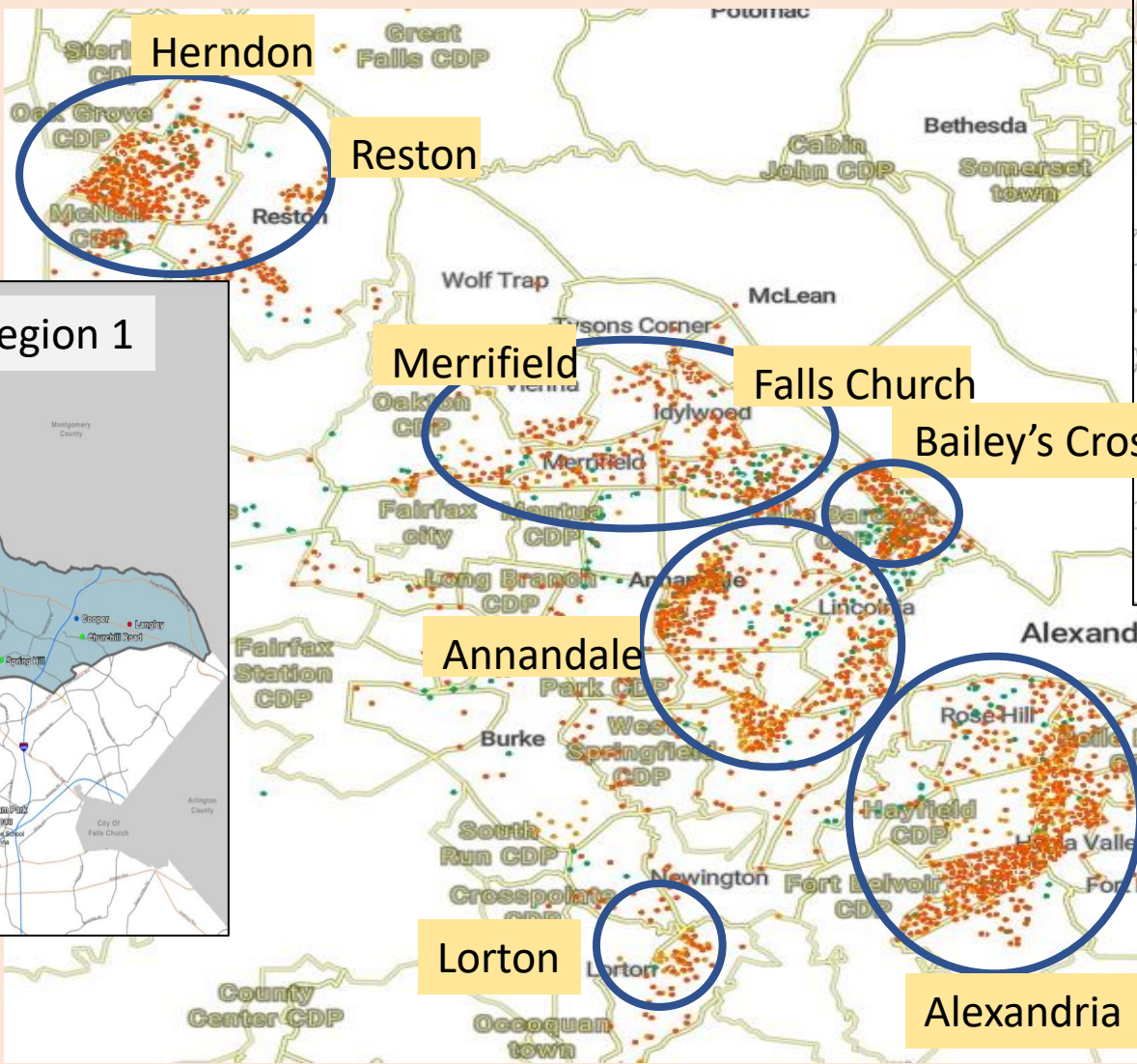
Fairfax County

Fairfax County has 79,995 Northern Triangle Origin Residents
43% of the Total Hispanic Population of 187,160.

Northern Triangle Origin Residents in Fairfax County

Northern Triangle Origin Residents are concentrated in Herndon/Reston, Merrifield, Annandale and Alexandria

Northern Triangle Origin Residents In Fairfax County by School Region



Northern Triangle Origin Populations - <https://www.socialexplorer.com/cc2f21cc7d/view>
 FCPS Region Maps - <https://www.fcps.edu/about-fcps/planning-future/maps>

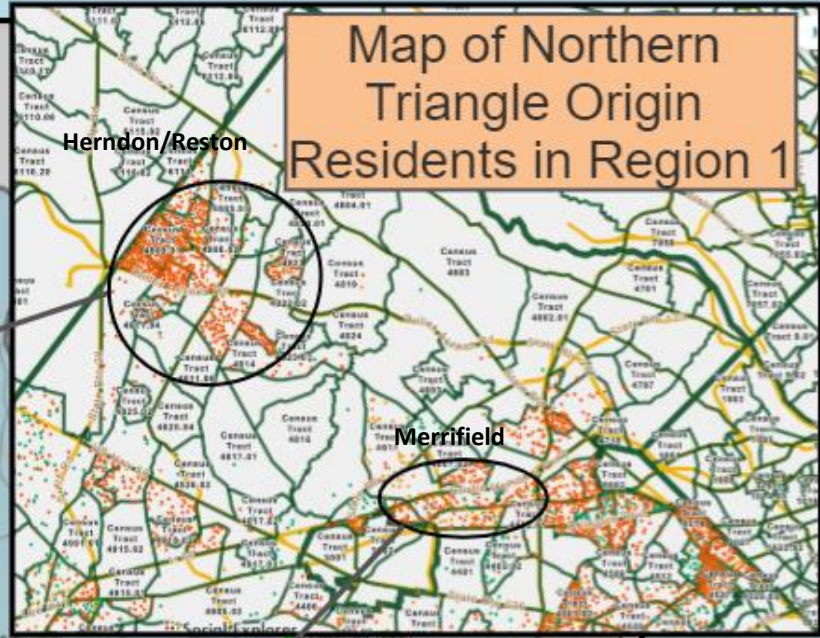
**Region 1
Herndon/Reston
Merrifield**

**Map of Northern
Triangle Origin
Residents in Region 1**

**Herndon/Reston
Public Schools
Percent Hispanic
Students**

- Aldrin ES - 15%
- Armstrong ES - 12%
- Clearview ES - 55%
- Dranesville ES - 45%
- Forest Edge ES - 24%
- Fox Mill ES - 8%
- Herndon ES - 61%
- Hunter Woods - 10%
- Hutchinson ES - 75%
- Lake Anne ES - 31%
- Herndon MS - 51%
- Hughes MS - 32%
- Herndon HS - 47%
- South Lakes HS - 23%

**Herndon
Reston**



**Merrifield Area
Public Schools
Percent Hispanic Students**

- Marshall Road ES - 18%
- Mosaic ES - 17%
- Oakton ES - 11%
- Oakton HS - 11%

Merrifield

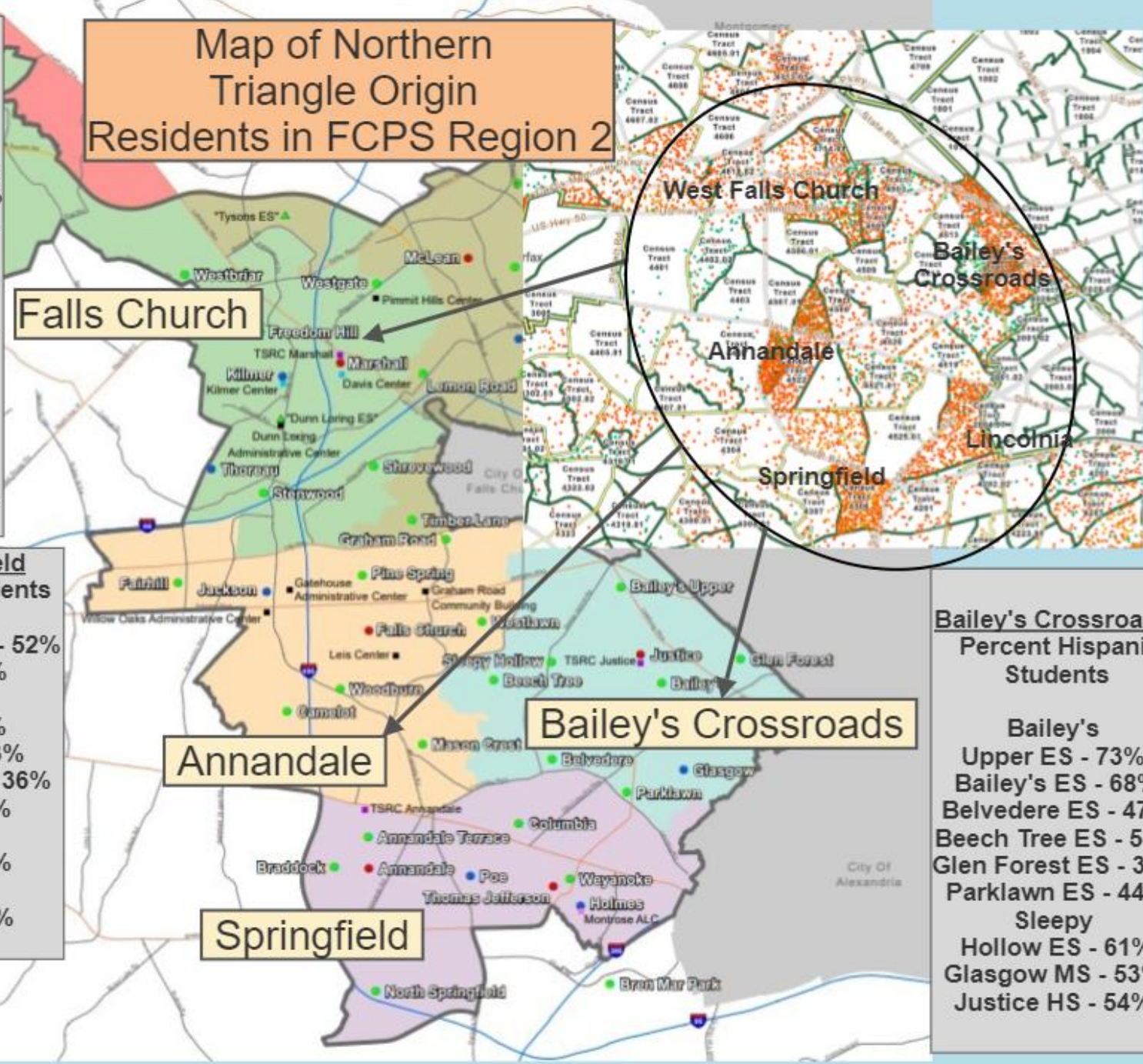
Northern Triangle Origin Residents in Region 1, Fairfax County Public School System are located primarily in Herndon/Reston & Merrifield Communities

Map of Northern Triangle Origin Residents in FCPS Region 2

- West Falls Church
Percent Hispanic Students**
- Fairhill ES - 19%
 - Freedom Hill ES - 27%
 - Graham Road ES - 81%
 - Lemon Road ES - 17%
 - Pine Spring ES - 59%
 - ShreveWood ES - 21%
 - Stenwood ES - 10%
 - Timber Lane ES - 55%
 - Westlawn ES - 70%
 - Jackson MS - 48%
 - Kilmer MS - 19%
 - Thoreau MS - 18%
 - Marshall HS - 21%
 - Falls Church HS - 55%

- Annandale/Springfield
Percent Hispanic Students**
- Annandale Terrace ES - 52%
 - Braddock ES - 81%
 - Camelot - 28%
 - Columbia ES - 31%
 - Mason Crest ES - 43%
 - North Springfield ES - 36%
 - Weyanoke ES - 50%
 - Westlawn - 70%
 - Woodburn ES - 62%
 - Poe MS - 61%
 - Annandale HS - 49%

- Bailey's Crossroads
Percent Hispanic Students**
- Bailey's Upper ES - 73%
 - Bailey's ES - 68%
 - Belvedere ES - 47%
 - Beech Tree ES - 53%
 - Glen Forest ES - 38%
 - Parklawn ES - 44%
 - Sleepy Hollow ES - 61%
 - Glasgow MS - 53%
 - Justice HS - 54%



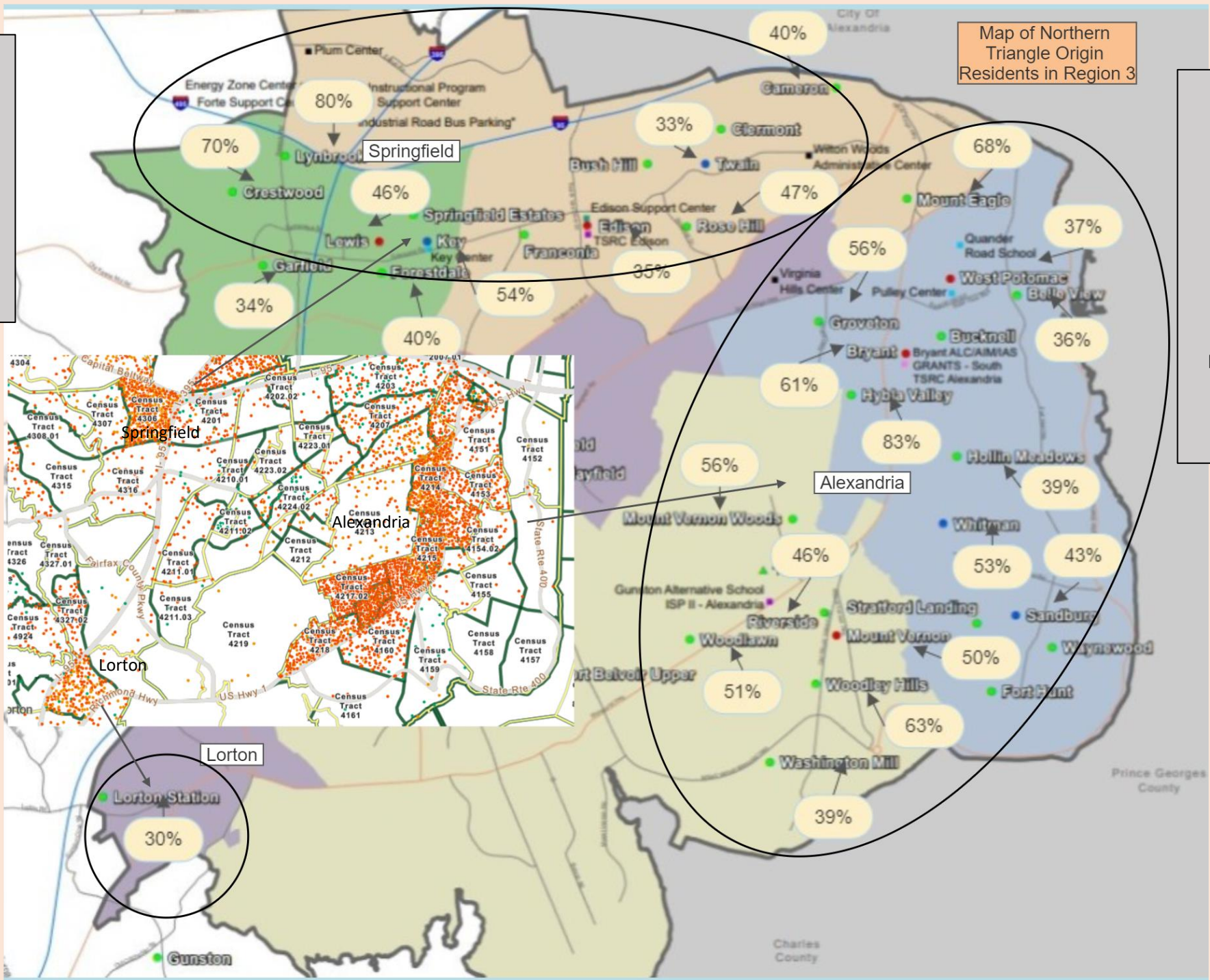
**Springfield
Priority Schools**

- Crestwood ES – 70%
- Lynbrook ES – 80%
- Lewis HS – 46%
- Forestdale ES – 40%
- Key MS – 54%
- Rose Hill – 47%
- Cameron – 40%

Map of Northern
Triangle Origin
Residents in Region 3

**Alexandria
Priority Schools**

- Mount Eagle ES – 68%
- Groveton ES – 56%
- Bryant HS – 61%
- Hybla Valley ES – 40%
- Mount Vernon ES – 56%
- Whitman MS – 53%
- Sandburg MS – 43%
- Mount Vernon HS – 50%
- Woodley Hills ES – 63%
- Woodlawn ES – 51%
- Riverside ES 46%



Priority Schools for Public & Private Support to Address the Needs of Unaccompanied Children

Region 1

Herndon/Reston Priority Schools

Clearview ES – 55%
Dranesville ES – 45%
Herndon ES – 61%
Herndon MS – 51%
Herndon HS – 47%
Hutchinson ES – 75%

Region 2

West Falls Church Priority Schools

Graham Road ES – 81%
Pine Spring ES – 59%
Timber Lane ES – 55%
Westlawn -70%
Woodburn ES – 62%
Falls Church HS – 55%

Annandale-Springfield Priority Schools

Annandale Terrace ES – 52%
Braddock ES – 81%
Mason Crest ES – 43%
Weyanoke ES – 51%
Poe MS – 61%
Annandale HS – 49%

Bailey's Crossroads Priority Schools

Bailey's Upper ES – 73%
Bailey's ES – 68%
Belvedere ES – 47%
Beech Tree ES – 53%
Parklawn ES – 44%
Sleepy Hollow ES – 61%
Glasgow MS – 53%
Justice HS – 54%

Region 3

Springfield Priority Schools

Crestwood ES – 70%
Lynbrook ES – 80%
Lewis HS – 46%
Forestdale ES – 40%
Key MS – 54%
Rose Hill – 47%
Cameron – 40%

Alexandria Priority Schools

Mount Eagle ES – 68%
Groveton ES – 56%
Bryant HS – 61%
Hybla Valley ES – 40%
Mount Vernon Woods ES – 56%
Whitman MS – 53%
Sandburg MS – 43%
Mount Vernon HS – 50%
Woodley Hills ES – 63%
Woodlawn ES – 51%
Riverside ES 46%

Public & Private Resources to Support Refugee Communities in Fairfax County, Virginia

- Foundations – Educate Fairfax Foundation
- Non-Profits – Lutheran Immigration & Resettlement Services, Honduras Mission Committee, Project Honduras Child, Immigrant Outreach & Refugee Center, U.S. Committee for Refugees & Immigrants, Refugee Empowerment & Support Taskforce.
- Religious Denominations – Churches
- Federal Programs – Office of Refugee Resettlement
- State Programs – Virginia Department of Social Services
- Northern Triangle Embassies – Honduras, El Salvador & Guatemala
- Fortune 500 Companies (Philanthropic Programs) – Freddie Mac, General Dynamics, Northrop Grumman, Capital One Financial, DXC Technology, Leidos Holdings, Reston, information technology; #338. Hilton Worldwide Holdings, Tysons, hospitality; #417. NVR, Beacon Roofing, Booz Allen Hamilton, SAIC.

Assistance by Zip Code

Zip Code 20170

Clearview ES – 55%
 Dranesville ES – 45%
 Herndon ES – 61%
 Herndon MS – 51%
 Herndon HS – 47%
 Hutchinson ES – 75%

Zip Code 22042

Beech Tree ED – 53%
 Graham Road ES – 81%
 Pine Spring ES – 59%
 Westlawn -70%
 Woodburn ES – 62%
 Falls Church HS – 55%

Zip Code 22003

Annandale
 Terrace ES – 52%
 Braddock ES – 81%
 Mason Crest ES – 43%
 Poe MS -61%
 Annandale HS – 49%

Zip Code 22044

Bailey's Upper ES – 73%
 Sleepy Hollow ES – 61%
 Justice HS – 54%

Zip Code 22046

Timberlane ES – 55%

Zip Code 22150

Crestwood ES – 70%
 Lynbrook ES – 80%
 Lewis HS – 46%
 Forestdale ES – 40%
 Key MS – 54%

Zip Code 22306

Groveton ES – 56%
 Bryant HS – 61%
 Hybla Valley ES – 40%
 Whitman MS – 53%

Zip Code 22041

Bailey's ES – 68%
 Belvedere ES – 47%

Zip Code 22312

Parklawn ES – 44%
 Glasgow MS – 53%
 Weyanoke ES – 51%

Zip Code 22309

Mount Vernon Woods ES – 56%
 Mount Vernon HS – 50%
 Woodley Hills ES – 63%
 Woodlawn ES – 51%
 Riverside ES - 46%

Zip Code 22308

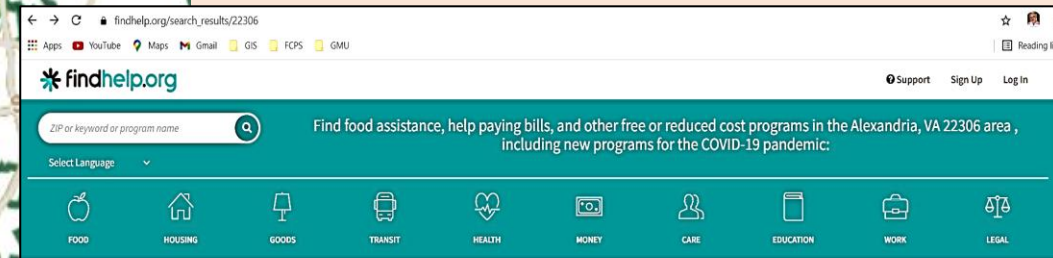
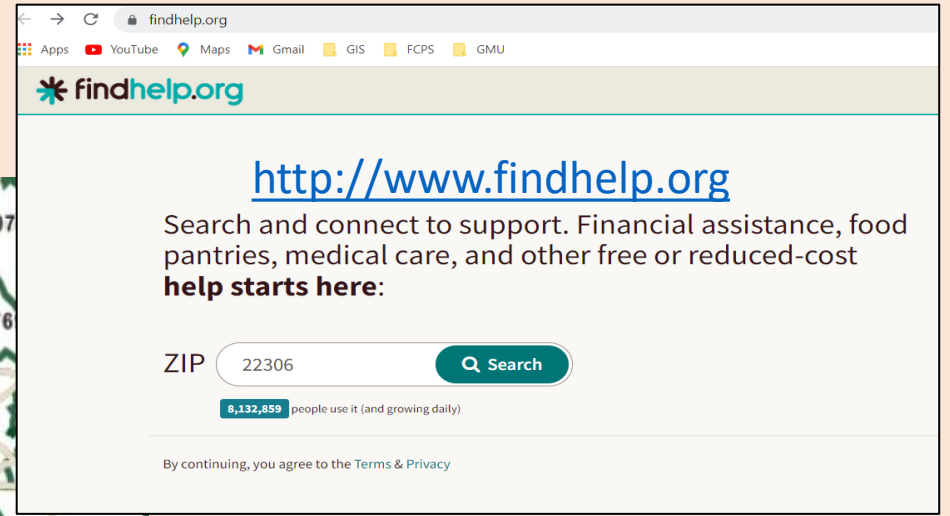
Sandburg MS – 43%

Zip Code 22303

Mt. Eagle ES -68%
 Cameron ES – 40%

Zip Code 22310

Rose Hill ES – 47%



2,443 programs

in the Alexandria, VA 22306 area

Choose from the categories above and browse local programs, or search for any service. Select Language to translate the site.

Questions?