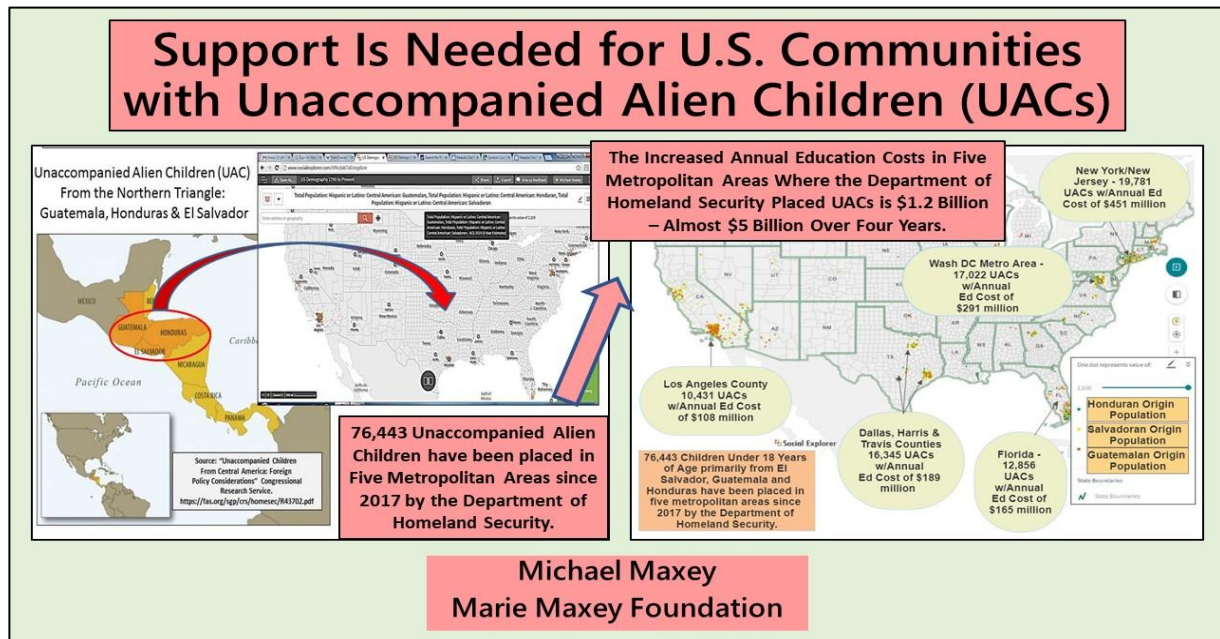


Why Helping Public Schools in U.S. Communities Impacted by Irregular Immigration is Good Politics

Michael Maxey¹

Vice President Joe Biden is proposing a \$4 billion [Central American](#) social, economic and governance initiative to address the root causes of out migration from the Northern Triangle.² This initiative is part of comprehensive immigration reform that would also restore asylum procedures allowing immigrants to stay in the United States while their cases are adjudicated. While there are many that welcome a return to a fair and just review of asylum claims, the fact that there are now over 1.2 million pending claims and long delays in the adjudication process could provide an incentive for renewed out migration from the Northern Triangle.

According to the Department of Homeland Security's Office of Refugee Resettlement, over 76,000 children apprehended alone at the border since 2016 have been placed in U.S. communities as Unaccompanied Alien Children (UAC). The majority of these children are from the Northern Triangle and a change in U.S. immigration procedures could potentially provide an incentive for more children to be sent North for reunification with their families, and to escape the murderous situation back home where recruitment to gangs is often a choice between life and death. So, they attempt to come here, as a "safer" refuge. There are many costs and benefits of this migration but one aspect – an estimated \$1.2 billion cost of public-school education -- could especially impact elderly, retired, fixed-income home owners.



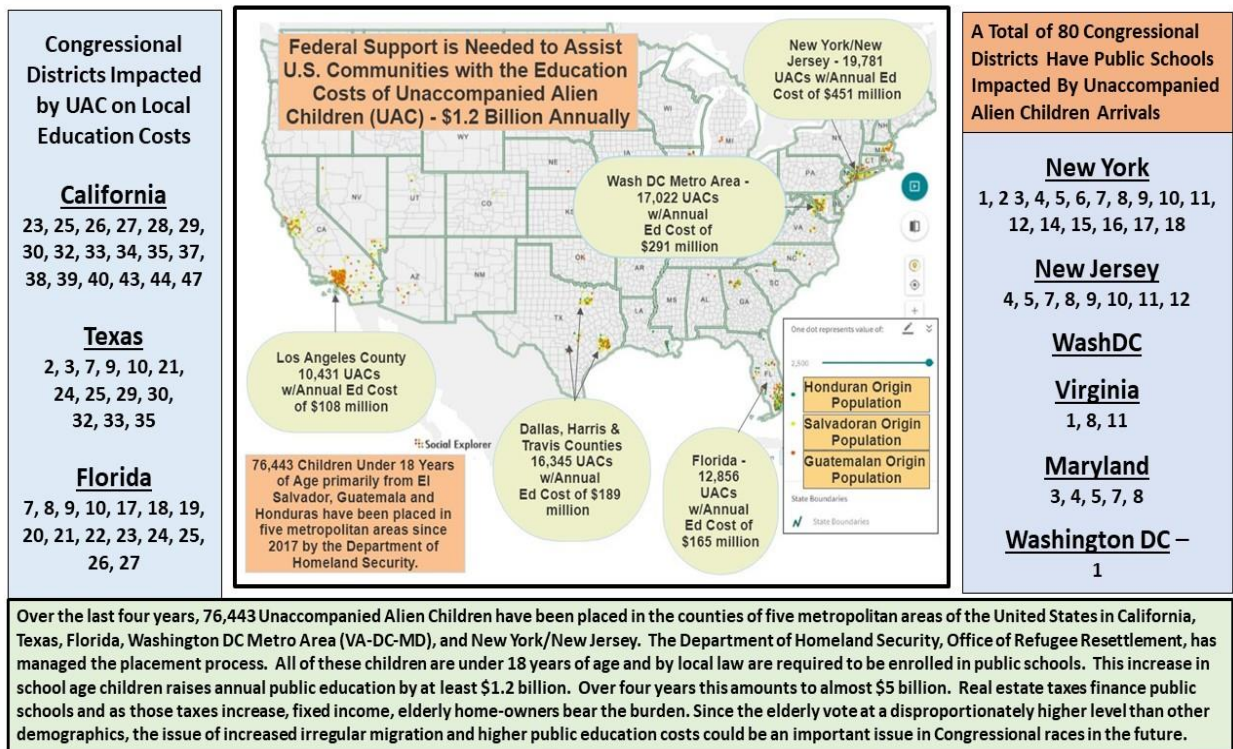
While not directly related, real estate taxes generally support local public-school costs and as public education costs increase there may be an increase in real estate taxes. Fixed-income seniors have already been hard hit by real estate tax increases in the primary destination counties for Unaccompanied Alien Children. A greater increase in these immigrants could significantly increase public school costs and potentially result in real estate tax increases.

¹ Michael Maxey, a retired Foreign Service Officer with the U. S. Agency for International Development, is the Executive Director of the [Marie Maxey Foundation](#), a 501c3 non-profit that provides scholarships and mentoring support for Hispanic youth.

² See <https://joebiden.com/centralamerica/>.

To offset this impact on U.S. communities in which these children and their families reside, there should be a \$4 billion initiative to help public schools with the education costs of Unaccompanied Alien Children. This would provide support for our communities that are bearing the burden of irregular immigration and should lessen the need for real estate tax increases that could hit senior citizens the hardest. According to the AARP, 71 percent of over-65 seniors voted in 2016 election – finding ways to prevent hardship for these voters should be every politician’s priority.³

In analyzing where Unaccompanied Alien Children have been placed over the last four years, there are five major areas of the country that are impacted: California, Texas, Florida, Washington DC Metro Area, and New York/New Jersey. A breakdown by county identifies which school systems have been affected. Increased costs were calculated by determining the number of Unaccompanied Alien Children placed there multiplied by the average yearly cost of public education. The map below highlights the 80 Congressional Districts that are impacted in some degree by increased education costs. Of these 80 Congressional Districts, 62 are currently held by a Democratic incumbent.



With the communities identified by county and Congressional Districts, the increase in real estate taxes over the last four years was estimated. The following graphics show each state with a breakdown of the number of Unaccompanied Alien Children, their cost to the public-school system, and how much real estate taxes have increased based on property values multiplied by the current tax rate for real estate. This is a rough approximation but it gives a general sense of what has happened in terms of real estate taxes in these communities. This analysis takes the housing value estimated by Zillow (median house value) for each year and multiplies that times the current tax rate. The impact of California’s Proposition 13 was not part of the analysis for assessing increases in real estate taxes in California.⁴

³ <https://www.aarp.org/politics-society/government-elections/info-2018/power-role-older-voters.html>.

⁴ According to Santa Clara County Tax Accessor [website](#): “Under Prop 13, all real property has established base year values, a restricted rate of increase on assessments of no greater than 2% each year, and a limit on property taxes to 1% of the assessed value.”

Los Angeles county in California has had 10,431 Unaccompanied Alien Children placed there since 2016 and 18 Congressional Districts are impacted. Total increased cost for education is \$108 million. The real estate tax on an average home has increased 24 percent over the last five years – going from \$3,995 to \$4,968.

California Congressional Districts

23rd – Kevin McCarthy (R)
 25th – Mike Garcia (R)
 26th – Julia Brownley (D)
 27th – Judy Chu (D)
 28th – Adam Schiff (D)
 29th – Tony Cardenas (D)
 30th – Brad Sherman (D)
 32nd – Grace Napolitano (D)
 33rd – Ted Lieu (D)
 34th – Jimmy Gomez (D)
 35th – Norma J. Torres (D)
 37th – Karen Bass (D)
 38th – Linda T. Sanchez (D)
 39th – Gil Cisneros (D)
 40th – Lucille Roybal-Allard (D)
 43rd – Maxine Waters (D)
 44th – Nanette Barragan (D)
 47th – Alan Lowenthal (D)

INCREASED EDUCATION COSTS IN CALIFORNIA

\$108 million per year in Los Angeles County

Unaccompanied Alien Children (UAC) Placements in California - FY2016 - FY2019
 Source: Office of Refugee Resettlement, U.S. Department of Health and Human Services

County	FY2016	FY2017	FY2018	FY2019
Alameda	366	213	304	411
Contra Costa	209	187	187	185
Fresno	185	138	132	152
Glenn	90	77	83	89
Los Angeles	1517	2956	1810	2198
Madera	173	124	106	144
Merced	140	117	93	89
Orange	188	250	202	214
Riverside	110	249	236	288
Sacramento	75	76	88	106
San Bernardino	175	148	104	119
San Diego	230	176	213	144
San Francisco	223	220	207	223
San Joaquin	76	42	89	83
San Mateo	296	389	344	380
Santa Barbara	183	28	89	81
Santa Clara	234	208	189	227
Tulare	54	58	0	0
Stanislaus	30	0	0	0
Yuba	86	99	75	109

Los Angeles County has 18 Congressional Districts: 23, 25, 26, 27, 28, 29, 30, 32, 33, 34, 35, 37, 38, 39, 40, 43, 44, 47.
Notes: 23, 25, 26, 27, 35, 39 & 47 extend into other counties.

10,431 UACs Placed in Los Angeles County 2016 - 2019 Increased Education Costs by \$108 million Per Year
<https://home.lausd.net/classic.jsp>

OVERALL IMPACT

10,431 Unaccompanied Alien Children

Increased Annual Education Cost of \$108 million.

Annual Resources Needed From the Federal Government

\$108 million

18 Congressional Districts Impacted By Irregular Migration

18 Districts

23rd, 25th, 26th, 27th, 28th, 29th, 30th, 32nd, 33rd, 34th, 35th, 37th, 38th, 39th, 40th, 43rd, 44th, & 47th.

Over the last four years, 10,431 Unaccompanied Alien Children have been placed in these counties by the Department of Homeland Security, Office of Refugee Resettlement. This increase in school age children causes an annual \$108 million increase in public school costs – \$0.43 billion over four years. Real estate taxes are used to finance public schools and as those taxes increase, the fixed income, elderly home-owners bear the burden. Since the elderly vote at a disproportionately higher level than other demographics, the issue of increased irregular migration and higher public education costs could be an important issue in Congressional races in the future. This information is being shared with these Congressional representatives along with a proposal to address immigration issues.

California Home Value* - 2016 – 2020

*Zillow Home Value Index

Year	Single Family Residences	
	Los Angeles County	
2020	\$658,000	
2019	\$635,000	
2018	\$607,000	
2017	\$567,000	
2016	\$529,000	

Zillow Home Value

<https://www.zillow.com/los-angeles-county-ca/home-values/>

Year	Avg. Real Estate Tax
2016	\$3,994
2017	\$4,280
2018	\$4,582
2019	\$4,794
2020	\$4,968
2021 (Forecast)	\$694K

Average County Tax Rate (Los Angeles County): 0.755%

<https://smartasset.com/taxes/california-property-tax-calculator#zk6HZB99rS>

In Texas, three metropolitan areas have been impacted -- Dallas, Harris and Travis counties -- with 16,345 Unaccompanied Alien Children placed there since 2016. Total increased cost for education is \$189 million per year. The real estate tax has increased significantly in all three counties.

Texas Congressional Districts

2nd – Daniel Crenshaw (R)

3rd – Van Taylor (R)

7th – Lizzie Fletcher (D)

9th – Julia Brownley (D)

10th – Michael McCaul (R)

21st – Chip Roy (R)

24th – Kenny Marchant (R)

25th – Roger Williams (R)

29th – Sylvia R. Garcia (D)

30th – Eddie Bernice Johnson (D)

32nd – Collin Allred (D)

33rd – Marc Veasey (D)

35th – Lloyd Doggett (D)

TEXAS

INCREASED EDUCATION COSTS IN TEXAS

Dallas County

Dallas Independent School District
* 153,333 students enrolled
* Annual Budget - \$1.986 billion with per student cost - \$12,954
Increased Education Cost of 3,509 UAC Students is \$45.5 million per year.

Travis County

Austin Independent School District
* 79,827 students enrolled
* Annual Budget - \$1.3 billion with per student cost - \$16,285
Increased Education Cost of 1,514 UAC Students is \$24.7 million per year.

Harris County

Houston Independent School District
* Largest in Texas with 214,175 students
* Annual Budget - \$2.1 billion with per student cost - \$9,539
Increased Education Cost of 11,322 UAC Students is \$118 million per year.

Congressional Districts

2nd, 3rd
7th, 9th
10th, 21st
24th
25th
29th
30th
32nd
33rd
35th

Total Increased Cost in Public Education in Counties with Highest Placement of UAC is \$189.2 million year.

Congressional Districts in Dallas, Travis & Harris Counties

Dallas - 3, 24, 30, 32, 33
Travis - 10, 21, 25, 35
Harris - 2, 7, 9, 29

Unaccompanied Alien Children (UAC) Placements in Texas FY2016 - FY2019
Source: Office of Refugee Resettlement - HHS

County	October 2015 - May 2019				Total
	FY2016	FY2017	FY2018	FY2019	
Brewer	197	157	124	209	687
Brazos	0	0	0	58	58
Cameron	0	0	0	56	56
Collin	107	77	0	89	273
Dallas	1,339	863	999	900	3,301
Denton	55	66	0	76	197
Fort Bend	93	69	0	54	216
Galveston	91	62	51	76	280
Harris	3,430	2,736	2,079	3,073	11,318
Hidalgo	0	52	0	0	52
Jefferson	0	0	56	50	106
Montgomery	149	138	95	113	495
Tarrant	259	218	126	200	803
Travis	394	386	266	468	1,514

Over the last four years, 16,345 Unaccompanied Alien Children have been placed in these counties by the Department of Homeland Security, Office of Refugee Resettlement. This increase in school age children causes an annual \$189 million increase in public school costs -- \$0.76 billion over four years. Real estate taxes are used to finance public schools and as those taxes increase, the fixed income, elderly home-owners bear the burden. Since the elderly vote at a disproportionately higher level than other demographics, the issue of increased irregular migration and higher public education costs could be an important issue in Congressional races in the future. This information is being shared with these Congressional representatives along with a proposal to address immigration issues.

Texas Home Value* 2016 – 2020

*Zillow Home Value Index

Year	Single Family Residences		
	Dallas County	Travis County	Harris County
2016	\$159,000	\$316,000	\$172,000
2017	\$178,000	\$334,000	\$179,000
2018	\$194,000	\$349,000	\$185,000
2019	\$214,000	\$364,000	\$195,000
2020	\$222,000	\$381,000	\$200,000

Zillow Home Value

Dallas County – <https://www.zillow.com/dallas-county-tx/home-values/>

Travis County – <https://www.zillow.com/travis-county-tx/home-values/>

Harris County – <https://www.zillow.com/harris-county-tx/home-values/>

Harris County Real Estate Tax

2020	\$4,180
2019	\$4,075
2018	\$3,867
2017	\$3,741
2016	\$3,595

Average County Tax Rate @ 2.090% (Harris County)

<https://smartasset.com/taxes/harris-county-texas-property-tax-calculator#harris%20county%20>

Travis County Real Estate Tax

2020	\$6,869
2019	\$6,563
2018	\$6,293
2017	\$6,022
2016	\$5,698

Average County Tax Rate @ 1.803% (Travis County)

<https://smartasset.com/taxes/texas-property-tax-calculator#xZaMy7ynU>

Dallas County Real Estate Tax

2020	\$4,422
2019	\$4,263
2018	\$3,865
2017	\$3,546
2016	\$3,167

Average County Tax Rate @ 1.992% (Dallas County)

<https://smartasset.com/taxes/texas-property-tax-calculator#lIXeQw1un>

In New York/New Jersey, eleven counties have been impacted – five in New Jersey and six in New York. A total of 19,789 Unaccompanied Alien Children have been placed in these counties since 2016. Total increased cost for education is \$451 million per year. The real estate tax has increased significantly in all eleven counties.

New York Congressional Districts

1st – Lee Zeldin (R)
2nd – Peter King (R)
3rd – Tom Suozzi (D)
4th – Kathleen Rice (D)
5th – Gregory Meeks (D)
6th – Grace Meng (D)
7th – Nydia Velazquez (D)
8th – Hakeem Jeffries (D)
9th – Yvette Clark (D)
10th – Jerrod Nadler (D)
11th – Max Rose (D)
12th – Carolyn Maloney (D)
14th – Alexandria Ocasio-Cortez (D)
15th – Jose Serrano (D)
16th – Elliot Engel (D)
17th – Nita Lowery (D)
18th – Sean Patrick Maloney (D)

OVERALL IMPACT

19,789 Unaccompanied Alien Children

Increased Annual Education Cost of \$451 million.

Annual Resources Needed From the Federal Government \$451 million

New York
13,506 UACs

Congressional Districts NY - 1, 2, 3, 4, 5, 6, 7, 8, 9, 10, 11, 12, 14, 15, 16, 17 & 18

New Jersey
6,280 UACs

Congressional Districts NJ - 4, 5, 7, 8, 9, 10, 11 & 12,

INCREASED EDUCATION COSTS IN NY/NJ

NY's six counties with the highest number of UACs spend an additional \$319,887,886 each year. Based on an average cost per student of \$25,199 in NYC & \$23,091 in NY state. There were 3,805 UACs in NYC & 9,701 in NY state for a total of 13,506. Source: US Census Annual Survey of School Finance

Total Increase in Annual Education Cost for NY/NJ is \$450,819,706.

25 Congressional Districts Impacted By Irregular Migration

Unaccompanied Alien Children Placements FY 2016 - FY 2019
Source: Office of Refugee Resettlement Dept. of Homeland Security

State	County	FY2016	FY2017	FY2018	FY2019	Total
NY	Albany County	0	0	0	0	0
NJ	Bergen County	281	259	230	261	1031
NJ	Camden County	73	16	0	88	278
NJ	Essex County	228	228	180	363	999
NJ	Hudson County	267	314	215	282	1180
NJ	Merse County	183	243	156	201	783
NJ	Millison County	187	139	113	135	565
NJ	Monmouth County	87	85	0	76	348
NJ	Monroe County	138	144	137	208	627
NJ	Ocean County	0	82	0	51	133
NJ	Somerset County	71	0	0	81	152
NJ	Union County	192	88	84	133	597
NJ	Waco County	680	489	420	511	2100
NJ	Waco County	200	220	191	281	892
NJ	Dulles County	0	0	0	53	53
NJ	King County	441	461	402	540	1844
NJ	Waco County	1,278	917	378	620	3,193
NJ	Orange County	0	30	78	100	208
NJ	Queens County	798	709	873	873	3263
NJ	Rockland County	179	158	138	208	683
NJ	Suffolk County	1,472	1,047	432	855	3,806
NJ	Westchester County	304	225	210	253	992

NY - 1st, 2nd, 3rd, 4th, 5th, 6th, 7th, 8th, 9th, 10th, 11th, 12th, 14th, 15th, 16th, 17th & 18th.

NJ - 4th, 5th, 7th, 8th, 9th, 10th, 11th, & 12th.

25 Districts

New Jersey Congressional Districts

4th – Christopher Smith (R)
5th – Josh Gottheimer (D)
7th – Tom Malinowski (D)
8th – Albio Sires (D)
9th – Bill Pascrell, Jr (D)
10th – Donald Payne (D)
11th – Mike Sherrill (D)
12th – Bonnie Watson Coleman (D)

Over the last four years, 19,786 Unaccompanied Alien Children have been placed in these counties by the Department of Homeland Security, Office of Refugee Resettlement. This increase in school age children causes an annual \$451 million increase in public school costs – \$1.8 billion over four years. Real estate taxes are used to finance public schools and as those taxes increase, the fixed income, elderly home-owners bear the burden. Since the elderly vote at a disproportionately higher level than other demographics, the issue of increased irregular migration and higher public education costs could be an important issue in Congressional races in the future. This information is being shared with these Congressional representatives along with a proposal to address immigration issues.

New York Home Value* - 2016 – 2020

*Zillow Home Value Index

Year	Single Family Residences					
	Bronx County	Queens County	Kings County	Suffolk County	Nassau County	Westchester County
2020	\$322,000	\$536,000	\$670,000	\$542,000	\$563,000	\$642,000
2019	\$293,000	\$532,000	\$673,000	\$532,000	\$559,000	\$637,000
2018	\$271,000	\$496,000	\$642,000	\$511,000	\$527,000	\$644,000
2017	\$254,000	\$464,000	\$597,000	\$481,000	\$495,000	\$607,000
2016	\$240,000	\$428,000	\$570,000	\$465,000	\$472,000	\$602,000

Mar 2021 — Kings County \$50K
Average County Tax Rate 0.653% (Kings County)

Kings County
17.5% increase in real estate tax going from \$3,722 to \$4,375.

Mar 2021 — Suffolk County \$50K
Average County Tax Rate 2.346% (Suffolk County)

Suffolk County
17% increase in real estate tax going from \$10,909 to \$12,715.

Mar 2021 — Bronx County \$30K
Average County Tax Rate 0.967% (Bronx County)

Bronx County
34% increase in real estate tax going from \$2,321 to \$3,114.

Mar 2021 — Nassau County \$54K
Average County Tax Rate 2.240% (Nassau County)

Nassau County
19.3% increase in real estate tax going from \$10,573 to \$12,611.

Mar 2021 — Queens County \$52K
Average County Tax Rate 0.866% (Queens County)

Queens County
25% increase in real estate tax going from \$3,707 to \$4,642.

Mar 2021 — Westchester County \$63K
Average County Tax Rate 1.973% (Westchester County)

Westchester County
7% increase in real estate tax going from \$11,878 to \$12,667.

Zillow Home Value

Bronx County – <https://www.zillow.com/bronx-county-ny/home-values/>

Queens County – <https://www.zillow.com/queens-county-ny/home-values/>

Kings County – <https://www.zillow.com/kings-county-ny/home-values/>

Suffolk County – <https://www.zillow.com/suffolk-county-ny/home-values/>

Nassau County – <https://www.zillow.com/nassau-county-ny/home-values/>

Westchester County – <https://www.zillow.com/westchester-county-ny/home-values/>

In Florida, five counties have been impacted – Orange, Palm Beach, Broward, Miami-Dade and Lee – with 12,856 Unaccompanied Alien Children placed there since 2016. Total increased cost for education is \$165 million per year. The real estate tax has increased significantly in all five counties.

Florida Congressional Districts

7th – Stephanie Murphy (D)
8th – Bill Posey (R)
9th – Darren Soto (D)
10th – Val B. Demings (D)
17th – Greg Steube (R)
18th – Brian Mast (R)
19th – Francis Rooney (R)
20th – Alcee L. Hastings (D)
21st – Lois Frankel (D)
22nd – Ted Deutch (D)
23rd – Debbie Wasserman Schultz (D)
24th – Frederica S. Wilson
25th – Mario Diaz-Balart (R)
26th – Debbie Mucarsel-Powell (D)
27th – Donna E. Shalala (D)

Overall Impact

12,856 Unaccompanied Alien Children

Increased Annual Education Cost of \$165 million

FLORIDA

Total Increased Cost in Public Education in Counties with Highest Placement of 12,856 UAC is \$165.1 million per year.

Orange County
School District has 207,283 students – 9th largest in the US – with an annual budget of \$3.8 billion with per student cost of \$18,335. Increased education cost of 1,068 UAC students is \$19.6 million.

Palm Beach
School District has 193,000 students – 10th largest in the US – with an annual budget of \$3 billion with per student cost of \$15,544. Increased education cost of 4,188 UAC students is \$65.1 million.

Broward
272,504 students – 6th largest in the US – with an annual budget of \$2.3 billion with per student cost of \$8,440. Increased education cost of 1,473 UAC students is \$12.5 million.

Lee
94,405 students with an annual budget of \$1.6 billion. Increased education cost of 1,762 UAC students is \$28 million.

Dade
350,040 students with an annual budget of \$3.2 billion with per student cost of \$9,142. Increased education cost of 4,367 UAC students is \$39.9 million.

Congressional Districts

- Orange County - 7th, 8th, 9th & 10th
- Palm Beach - 18th, 20th, 21st & 22nd
- Broward - 20th, 22nd, 23rd, 24th & 25th
- Dade - 24th, 25th, 26th & 27th
- Lee - 17th, 19th & 25th

Congressional Districts

15 Districts

7th, 8th, 9th, 10th, 17th, 18th, 19th, 20th, 21st, 22nd, 23rd, 24th, 25th, 26th, 27th

12,856 Unaccompanied Alien Children with an increased Annual Education Cost of \$165 million

Note: According to July 16, 2019, testimony from the Acting Secretary of the Department of Homeland Security to the House Oversight and Reform Committee, 300,000 children, primarily from the Northern Triangle have entered the US from Oct. 2018 through June 2019 and only 80,000 of these children were UAC. This means there could be significantly more children in Northern Triangle destination cities in the US.

Over the last four years, 12,856 Unaccompanied Alien Children have been placed in these counties by the Department of Homeland Security, Office of Refugee Resettlement. This increase in school age children causes an annual \$165 million increase in public school costs -- \$0.66 billion over four years. Real estate taxes are used to finance public schools and as those taxes increase, the fixed income, elderly home-owners bear the burden. Since the elderly vote at a disproportionately higher level than other demographics, the issue of increased irregular migration and higher public education costs could be an important issue in Congressional races in the future. This information is being shared with these Congressional representatives along with a proposal to address immigration issues.

Florida Home Value* 2016 – 2020

*Zillow Home Value Index

Year	Single Family Residences				
	Orange County	Palm Beach County	Broward County	Lee County	Miami-Dade County
2020	\$270,000	\$298,000	\$285,000	\$241,000	\$319,000
2019	\$263,000	\$291,000	\$278,000	\$240,000	\$315,000
2018	\$242,000	\$278,000	\$261,000	\$233,000	\$296,000
2017	\$222,000	\$263,000	\$244,000	\$228,000	\$280,000
2016	\$206,000	\$246,000	\$225,000	\$215,000	\$258,000

Zillow Home Value

Orange County – <https://www.zillow.com/orange-county-fl/home-values/>

Palm Beach County – <https://www.zillow.com/palm-beach-county-fl/home-values/>

Broward County – <https://www.zillow.com/broward-county-fl/home-values/>

Lee County – <https://www.zillow.com/lee-county-fl/home-values/>

Miami - Dade County – <https://www.zillow.com/miami-dade-county-fl/home-values/>

In the Washington Metropolitan Area, seven counties and DC have been impacted – Arlington, Fairfax, Loudon counties in Virginia and Montgomery and Prince Georges counties in Maryland -- with 17,022 Unaccompanied Alien Children placed there since 2016. Total increased cost for education is \$291 million per year. The real estate tax has increased significantly in all these counties and DC.

Virginia Congressional Districts

1st – Rob Wittman (R)

8th – Donald S. Beyer, Jr. (D)

11th – Gerry E. Connolly (D)

Maryland Congressional Districts

3rd – John Sarbanes (D)

4th – Anthony Brown (D)

5th – Steny H. Hoyer (D)

7th – Francis Rooney (R)

8th – Alcee L. Hastings (D)

Washington DC

Delegate – Eleanor Holmes Norton (D)

INCREASED EDUCATION COSTS FOR WASHINGTON DC METRO AREA

Total Increase in Annual Cost of Public Education for Washington DC Metro Area is \$291,258,168 due to placement of 17,022 UACs from FY2016 - FY 2019.

Virginia

Northern Virginia's Increase in Annual Cost due to UAC Placements is \$132,642,944.

WashDC

Increase in Annual Cost of Public Education for in Washington DC due to UAC Placements is \$25,863,398.

Maryland

Montgomery & Prince George's Counties in Maryland have 7,987 UACs representing an annual cost of \$132,751,826.

UNACCOMPANIED ALIEN CHILDREN PLACEMENTS IN WASHINGTON DC METRO AREA FY2016 - FY 2019

	FY2016	FY2017	FY2018	FY2019		Cost per Student	Total Cost per Year	
Virginia								
Arlington County	363	345	54	176	338	\$	19,921.00	
Fairfax County	1322	971	460	1311	4063	\$	15,293.00	
Loudoun County	271	158	80	248	757	\$	20,822.00	
Prince William County	534	382	149	484	1549	\$	17,208.00	
Alexandria City	189	179	75	216	659	\$	19,455.00	
Manassas City	106	83	0	103	292	\$	15,588.00	
					7,858		\$	132,642,944.00
Maryland								
Montgomery County	1079	782	356	1165	3382	\$	16,478.00	
Prince George's County	1420	1056	571	1558	4605	\$	16,726.00	
					7,987		\$	132,751,826.00
Washington DC								
Washington DC	432	292	134	319	1,177	\$	21,974.00	
							\$	25,863,398.00

Overall Impact for Washington DC Area

17,022 Unaccompanied Alien Children

Increased Annual Cost in Education of \$291 million

Impact on Fairfax County

1,321 UACs

Increased Annual Cost in Education of \$62 million

Annual Resources Needed From the Federal Government

Washington DC Metro - \$291 million

Fairfax County \$62 million

Congressional Districts

8 District & 1 Delegate Office

VA – 1st, 8th & 11th

MD 3rd, 4th, 5th, 7th & 8th

Washington DC - 1

Over the last four years, 17,022 Unaccompanied Alien Children have been placed in these counties by the Department of Homeland Security, Office of Refugee Resettlement. This increase in school age children causes an annual \$291 million increase in public school costs -- \$1.20 billion over four years. Real estate taxes are used to finance public schools and as those taxes increase, the fixed income, elderly home-owners bear the burden. Since the elderly vote at a disproportionately higher level than other demographics, the issue of increased irregular migration and higher public education costs could be an important issue in Congressional races in the future. This information is being shared with these Congressional representatives along with a proposal to address immigration issues.

Washington DC Metro Area Home Value* - 2016 – 2020

*Zillow Home Value Index

Year	Single Family Residences						
	Fairfax County, VA	Loudoun County, VA	Arlington County, VA	Prince William County, VA	Montgomery County, MD	Prince George's County, MD	Washington DC
2016	\$528,000	\$483,000	\$646,000	\$352,000	\$443,000	\$216,000	\$542,000
2017	\$538,000	\$494,000	\$661,000	\$362,000	\$447,000	\$279,000	\$571,000
2018	\$549,000	\$519,000	\$667,000	\$378,000	\$460,000	\$297,000	\$590,000
2019	\$562,000	\$532,000	\$700,000	\$382,000	\$474,000	\$308,000	\$618,000
2020	\$589,000	\$555,000	\$745,000	\$401,000	\$476,000	\$316,000	\$637,000

Fairfax County
12% increase in real estate tax going from \$5,275 to \$5,884.

Arlington County
15% increase in real estate tax going from \$5,678 to \$6,549.

Loudoun County
15% increase in real estate tax going from \$5,303 to \$6,094.

Montgomery County
7.5% increase in real estate tax going from \$4,133 to \$4,441.

Prince Georges County
46% increase in real estate tax going from \$2,873 to \$4,203.

Prince William County
14% increase in real estate tax going from \$3,682 to \$4,195.

Zillow Home Value
Fairfax County, VA – <https://www.zillow.com/fairfax-county-va/home-values/>
Loudoun County, VA – <https://www.zillow.com/loudoun-county-va/home-values/>
Arlington County, VA – <https://www.zillow.com/arlington-county-va/home-values/>
Prince William County, VA – <https://www.zillow.com/prince-william-county-va/home-values/>
Montgomery County, MD – <https://www.zillow.com/montgomery-county-md/home-values/>
Prince George's County, MD – <https://www.zillow.com/prince-georges-county-md/home-values/>

Zillow Washington DC Real Estate Price
2016 - \$542,000 -> 2020 \$637,000

Average County Tax Rate 0.545% (District of Columbia)

The analysis shows that there will be more than a \$1 billion increase annually in education costs for these communities, if real estate taxes continue to increase there could be a political backlash from the elderly demographic against the Democratic position on immigration. With 62 Congressional Districts having a Democratic incumbent out of the 80 districts analyzed, there is a clear need for the Democrats to proactively address the impact of potential increases in migration to US communities by funding and implementing a \$4 billion education support initiative in these school districts or face the loss of close races in future years. Helping public schools in U.S. communities Impacted by irregular immigration is good politics.

Post Script – The recent House of Representatives election in California’s 25th district flipped the seat from Democratic to Republican. The post highlighted turnout of the elderly vote as an important factor. Paying attention to issues like support for public education and preventing real estate tax increases are clearly important as the country potentially moves toward more humane immigration policies. See the last comment on right in the post – “Tracking data shows a significant voting gap along generational lines. Roughly 56% of voters 65 and older returned a mail ballot. Just 19% of those younger than 35 did so.”

2020
Calif. 25th
Live Analysis
Wisc. 7th
Neb. Primary
Neb. Statewide
National Map
Delegate Count
State Results ▾

California Special Election Results: 25th Congressional District

Mike Garcia, a Republican and a former military pilot, has claimed victory in the race to replace former Representative Katie Hill. Christy Smith, his Democratic opponent, has conceded.

Updated May 16, 2020 82% reporting

Candidate	Party	Votes	Pct.	
✓ Mike Garcia	Republican	95,088	54.9%	<div style="width: 55%; height: 10px; background: linear-gradient(to right, red, red);"></div>
Christy Smith	Democrat	78,234	45.1	<div style="width: 45%; height: 10px; background: linear-gradient(to right, blue, blue);"></div>

173,322 votes, 338 of 411 precincts reporting

County	Garcia	Smith	Rpt.
Los Angeles	72,382	61,308	79%
Ventura	22,706	16,926	100

Our reporters are providing real-time updates.

Jennifer Medina May 13, 2020

Though officials have not yet completed the count in California's special election, Christy Smith has announced she is conceding the race to Mike Garcia. [Read more »](#)

Jennifer Medina May 13, 2020

If Garcia indeed wins, expect Democrats to downplay the loss by saying that the special election is too idiosyncratic to draw lessons for the fall.

Jennifer Medina May 13, 2020

There is no doubt that a win for Republicans in a state that is overwhelmingly controlled by Democrats would be remarkable.

Jennifer Medina May 13, 2020

No matter who wins, expect a rematch in November: both Smith and Garcia plan to run for a full term in the fall.

Jennifer Medina May 13, 2020

Tracking data shows a significant voting gap along generational lines. Roughly 56% of voters 65 and older returned a mail ballot. Just 19% of those younger than 35 did so.

8