

## Why Helping Public Schools in U.S. Communities Impacted by Irregular Immigration is Good Politics

Michael Maxey<sup>1</sup>

President Joe Biden is proposing a \$4 billion [Central American](#) social, economic and governance initiative to address the root causes of out migration from the Northern Triangle.<sup>2</sup> This initiative is part of comprehensive immigration reform that would also restore asylum procedures allowing immigrants to stay in the United States while their cases are adjudicated. While there are many that welcome a return to a fair and just review of asylum claims, the fact that there are now over 1.2 million pending claims and long delays in the adjudication process could provide an incentive for renewed out migration from the Northern Triangle.

According to the Department of Homeland Security's Office of Refugee Resettlement, over 76,000 children apprehended alone at the border since 2016 have been placed in U.S. communities as Unaccompanied Alien Children (UAC). The majority of these children are from the Northern Triangle and a change in U.S. immigration procedures could potentially provide an incentive for more children to be sent North for reunification with their families, and to escape the murderous situation back home where recruitment to gangs is often a choice between life and death. So, they attempt to come here, as a "safer" refuge. There are many costs and benefits of this migration but one aspect – an estimated \$1.2 billion cost of public-school education -- could especially impact elderly, retired, fixed-income home owners.



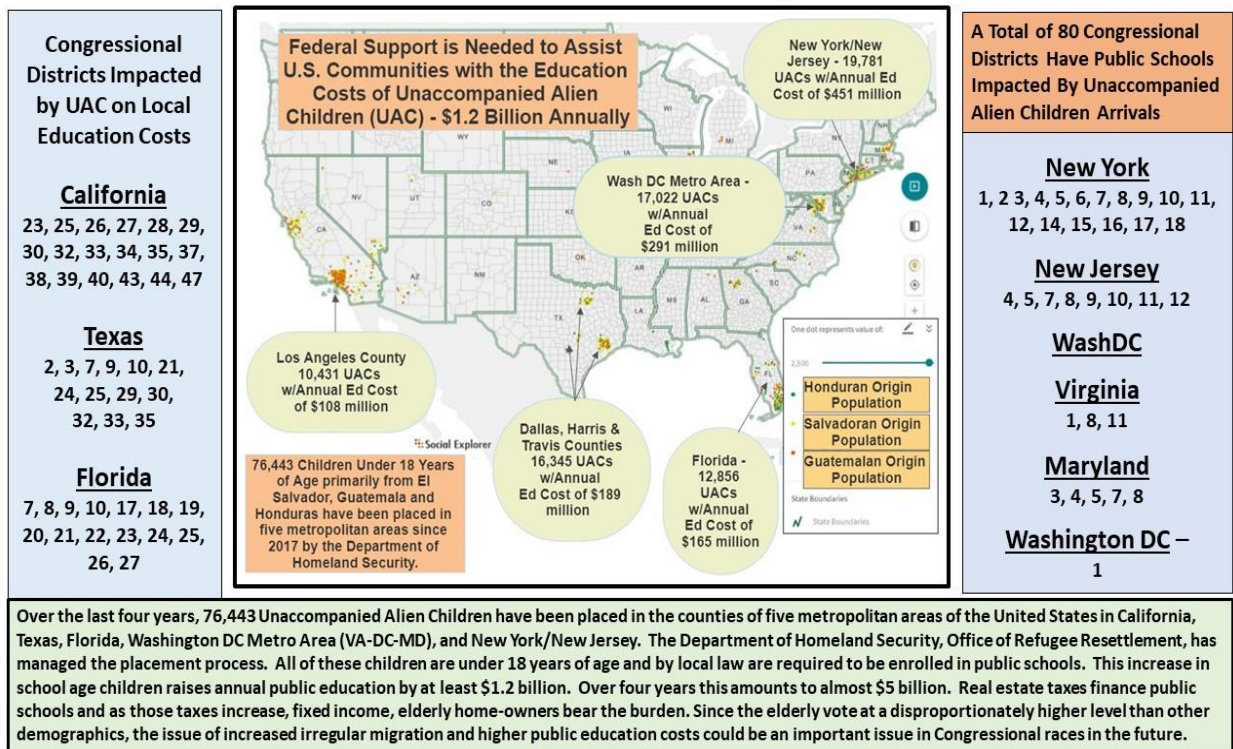
While not directly related, real estate taxes generally support local public-school costs and as public education costs increase there may be an increase in real estate taxes. Fixed-income seniors have already been hard hit by real estate tax increases in the primary destination counties for Unaccompanied Alien Children. A greater increase in these immigrants could significantly increase public school costs and potentially result in real estate tax increases.

<sup>1</sup> Michael Maxey, a retired Foreign Service Officer with the U. S. Agency for International Development, is the Executive Director of the [Marie Maxey Foundation](#), a 501c3 non-profit that provides scholarships and mentoring support for Hispanic youth.

<sup>2</sup> See <https://joebiden.com/centralamerica/>.

To offset this impact on U.S. communities in which these children and their families reside, there should be a \$4 billion initiative to help public schools with the education costs of Unaccompanied Alien Children. This would provide support for our communities that are bearing the burden of irregular immigration and should lessen the need for real estate tax increases that could hit senior citizens the hardest. According to the AARP, 71 percent of over-65 seniors voted in 2016 election – finding ways to prevent hardship for these voters should be every politician’s priority.<sup>3</sup>

In analyzing where Unaccompanied Alien Children have been placed over the last four years, there are five major areas of the country that are impacted: California, Texas, Florida, Washington DC Metro Area, and New York/New Jersey. A breakdown by county identifies which school systems have been affected. Increased costs were calculated by determining the number of Unaccompanied Alien Children placed there multiplied by the average yearly cost of public education. The map below highlights the 80 Congressional Districts that are impacted in some degree by increased education costs. Of these 80 Congressional Districts, 62 are currently held by a Democratic incumbent.



With the communities identified by county and Congressional Districts, the increase in real estate taxes over the last four years was estimated. The following graphics show each state with a breakdown of the number of Unaccompanied Alien Children, their cost to the public-school system, and how much real estate taxes have increased based on property values multiplied by the current tax rate for real estate. This is a rough approximation but it gives a general sense of what has happened in terms of real estate taxes in these communities. This analysis takes the housing value estimated by Zillow (median house value) for each year and multiplies that times the current tax rate. The impact of California’s Proposition 13 was not part of the analysis for assessing increases in real estate taxes in California.<sup>4</sup>

<sup>3</sup> <https://www.aarp.org/politics-society/government-elections/info-2018/power-role-older-voters.html>.  
<sup>4</sup> According to Santa Clara County Tax Accessor [website](#): “Under Prop 13, all real property has established base year values, a restricted rate of increase on assessments of no greater than 2% each year, and a limit on property taxes to 1% of the assessed value.”

Los Angeles county in California has had 10,431 Unaccompanied Alien Children placed there since 2016 and 18 Congressional Districts are impacted. Total increased cost for education is \$108 million. The real estate tax on an average home has increased 24 percent over the last five years – going from \$3,995 to \$4,968.

**California Congressional Districts**

23<sup>rd</sup> – Kevin McCarthy (R)  
 25<sup>th</sup> – Mike Garcia (R)  
 26<sup>th</sup> – Julia Brownley (D)  
 27<sup>th</sup> – Judy Chu (D)  
 28<sup>th</sup> – Adam Schiff (D)  
 29<sup>th</sup> – Tony Cardenas (D)  
 30<sup>th</sup> – Brad Sherman (D)  
 32<sup>nd</sup> – Grace Napolitano (D)  
 33<sup>rd</sup> – Ted Lieu (D)  
 34<sup>th</sup> – Jimmy Gomez (D)  
 35<sup>th</sup> – Norma J. Torres (D)  
 37<sup>th</sup> – Karen Bass (D)  
 38<sup>th</sup> – Linda T. Sanchez (D)  
 39<sup>th</sup> – Gil Cisneros (D)  
 40<sup>th</sup> – Lucille Roybal-Allard (D)  
 43<sup>rd</sup> – Maxine Waters (D)  
 44<sup>th</sup> – Nanette Barragan (D)  
 47<sup>th</sup> – Alan Lowenthal (D)

**INCREASED EDUCATION COSTS IN CALIFORNIA**

\$108 million per year in Los Angeles County

Los Angeles County has 18 Congressional Districts: 23, 25, 26, 27, 28, 29, 30, 32, 33, 34, 35, 37, 38, 39, 40, 43, 44, 47.  
Notes: 23, 25, 26, 27, 35, 39 & 47 extend into other counties.

10,431 UACs Placed in Los Angeles County 2016 - 2019 Increased Education Costs by \$108 million Per Year

<https://home.lausd.net/classic.jsp>

**OVERALL IMPACT**

10,431 Unaccompanied Alien Children

Increased Annual Education Cost of \$108 million.

Annual Resources Needed From the Federal Government

\$108 million

**18 Congressional Districts Impacted By Irregular Migration**

18 Districts

23<sup>rd</sup>, 25<sup>th</sup>, 26<sup>th</sup>, 27<sup>th</sup>, 28<sup>th</sup>, 29<sup>th</sup>, 30<sup>th</sup>, 32<sup>nd</sup>, 33<sup>rd</sup>, 34<sup>th</sup>, 35<sup>th</sup>, 37<sup>th</sup>, 38<sup>th</sup>, 39<sup>th</sup>, 40<sup>th</sup>, 43<sup>rd</sup>, 44<sup>th</sup>, & 47<sup>th</sup>.

Over the last four years, 10,431 Unaccompanied Alien Children have been placed in these counties by the Department of Homeland Security, Office of Refugee Resettlement. This increase in school age children causes an annual \$108 million increase in public school costs – \$0.43 billion over four years. Real estate taxes are used to finance public schools and as those taxes increase, the fixed income, elderly home-owners bear the burden. Since the elderly vote at a disproportionately higher level than other demographics, the issue of increased irregular migration and higher public education costs could be an important issue in Congressional races in the future. This information is being shared with these Congressional representatives along with a proposal to address immigration issues.

## California Home Value\* - 2016 – 2020

\*Zillow Home Value Index

Year	Single Family Residences	
	Los Angeles County	
2020	\$658,000	
2019	\$635,000	
2018	\$607,000	
2017	\$567,000	
2016	\$529,000	

**Zillow Home Value**

<https://www.zillow.com/los-angeles-county-ca/home-values/>

**Average County Tax Rate** (Los Angeles County)

0.755%

<https://smartasset.com/taxes/california-property-tax-calculator#zk6HZB99rS>

In Texas, three metropolitan areas have been impacted -- Dallas, Harris and Travis counties -- with 16,345 Unaccompanied Alien Children placed there since 2016. Total increased cost for education is \$189 million per year. The real estate tax has increased significantly in all three counties.

**Texas Congressional Districts**

2<sup>nd</sup> – Daniel Crenshaw (R)

3<sup>rd</sup> – Van Taylor (R)

7<sup>th</sup> – Lizzie Fletcher (D)

9<sup>th</sup> – Julia Brownley (D)

10<sup>th</sup> – Michael McCaul (R)

21<sup>st</sup> – Chip Roy (R)

24<sup>th</sup> – Kenny Marchant (R)

25<sup>th</sup> – Roger Williams (R)

29<sup>th</sup> – Sylvia R. Garcia (D)

30<sup>th</sup> – Eddie Bernice Johnson (D)

32<sup>nd</sup> – Collin Allred (D)

33<sup>rd</sup> – Marc Veasey (D)

35<sup>th</sup> – Lloyd Doggett (D)

## TEXAS

**INCREASED EDUCATION COSTS IN TEXAS**

**Dallas County**

Dallas Independent School District  
\* 153,333 students enrolled  
\* Annual Budget - \$1.986 billion with per student cost - \$12,954  
Increased Education Cost of 3,509 UAC Students is \$45.5 million per year.

**Travis County**

Austin Independent School District  
\* 79,827 students enrolled  
\* Annual Budget - \$1.3 billion with per student cost - \$16,285  
Increased Education Cost of 1,514 UAC Students is \$24.7 million per year.

**Harris County**

Houston Independent School District  
\* Largest in Texas with 214,175 students  
\* Annual Budget - \$2.1 billion with per student cost - \$9,539  
Increased Education Cost of 11,322 UAC Students is \$118 million per year.

**Congressional Districts**

2<sup>nd</sup>, 3<sup>rd</sup>  
7<sup>th</sup>, 9<sup>th</sup>  
10<sup>th</sup>, 21<sup>st</sup>  
24<sup>th</sup>  
25<sup>th</sup>  
29<sup>th</sup>  
30<sup>th</sup>  
32<sup>nd</sup>  
33<sup>rd</sup>  
35<sup>th</sup>

**Total Increased Cost in Public Education in Counties with Highest Placement of UAC is \$189.2 million year.**

**Congressional Districts in Dallas, Travis & Harris Counties**

Dallas - 3, 24, 30, 32, 33  
Travis - 10, 21, 25, 35  
Harris - 2, 7, 9, 29

**Unaccompanied Alien Children (UAC) Placements in Texas FY2016 - FY2019**  
Source: Office of Refugee Resettlement - HHS

County	October 2015 - May 2019				Total
	FY2016	FY2017	FY2018	FY2019	
Brewer	197	157	124	209	687
Brazos	0	0	0	58	58
Cameron	0	0	0	56	56
Collin	107	77	0	89	273
Dallas	1,339	863	959	926	3,309
Denton	55	66	0	76	197
Fort Bend	93	69	0	54	216
Galveston	91	62	51	76	280
Harris	3,430	2,736	2,079	3,073	11,308
Hidalgo	0	52	0	0	52
Jefferson	0	0	56	50	106
Montgomery	149	138	95	113	495
Tarrant	259	218	126	200	803
Travis	394	386	266	468	1,514

Over the last four years, 16,345 Unaccompanied Alien Children have been placed in these counties by the Department of Homeland Security, Office of Refugee Resettlement. This increase in school age children causes an annual \$189 million increase in public school costs -- \$0.76 billion over four years. Real estate taxes are used to finance public schools and as those taxes increase, the fixed income, elderly home-owners bear the burden. Since the elderly vote at a disproportionately higher level than other demographics, the issue of increased irregular migration and higher public education costs could be an important issue in Congressional races in the future. This information is being shared with these Congressional representatives along with a proposal to address immigration issues.

### Texas Home Value\* 2016 – 2020

\*Zillow Home Value Index

Year	Single Family Residences		
	Dallas County	Travis County	Harris County
2016	\$159,000	\$316,000	\$172,000
2017	\$178,000	\$334,000	\$179,000
2018	\$194,000	\$349,000	\$185,000
2019	\$214,000	\$364,000	\$195,000
2020	\$222,000	\$381,000	\$200,000

**Zillow Home Value**

Dallas County – <https://www.zillow.com/dallas-county-tx/home-values/>

Travis County – <https://www.zillow.com/travis-county-tx/home-values/>

Harris County – <https://www.zillow.com/harris-county-tx/home-values/>

**Harris County Real Estate Tax**

2020	\$4,180
2019	\$4,075
2018	\$3,867
2017	\$3,741
2016	\$3,595

Average County Tax Rate @ 2.090% (Harris County)

<https://smartasset.com/taxes/harris-county-texas-property-tax-calculator#q=harris%20county%20>

**Travis County Real Estate Tax**

2020	\$6,869
2019	\$6,563
2018	\$6,293
2017	\$6,022
2016	\$5,698

Average County Tax Rate @ 1.803% (Travis County)

<https://smartasset.com/taxes/texas-property-tax-calculator#xZaMy7ynU>

**Dallas County Real Estate Tax**

2020	\$4,422
2019	\$4,263
2018	\$3,865
2017	\$3,546
2016	\$3,167

Average County Tax Rate @ 1.992% (Dallas County)

<https://smartasset.com/taxes/texas-property-tax-calculator#lIXeQw1un>

In New York/New Jersey, eleven counties have been impacted – five in New Jersey and six in New York. A total of 19,789 Unaccompanied Alien Children have been placed in these counties since 2016. Total increased cost for education is \$451 million per year. The real estate tax has increased significantly in all eleven counties.

**New York Congressional Districts**

1<sup>st</sup> – Lee Zeldin (R)  
2<sup>nd</sup> – Peter King (R)  
3<sup>rd</sup> – Tom Suozzi (D)  
4<sup>th</sup> – Kathleen Rice (D)  
5<sup>th</sup> – Gregory Meeks (D)  
6<sup>th</sup> – Grace Meng (D)  
7<sup>th</sup> – Nydia Velazquez (D)  
8<sup>th</sup> – Hakeem Jeffries (D)  
9<sup>th</sup> – Yvette Clark (D)  
10<sup>th</sup> – Jerrod Nadler (D)  
11<sup>th</sup> – Max Rose (D)  
12<sup>th</sup> – Carolyn Maloney (D)  
14<sup>th</sup> – Alexandria Ocasio-Cortez (D)  
15<sup>th</sup> – Jose Serrano (D)  
16<sup>th</sup> – Elliot Engel (D)  
17<sup>th</sup> – Nita Lowery (D)  
18<sup>th</sup> – Sean Patrick Maloney (D)

**OVERALL IMPACT**

**19,789 Unaccompanied Alien Children**

**Increased Annual Education Cost of \$451 million.**

**New York**  
13,506 UACs

**New Jersey**  
6,280 UACs

**INCREASED EDUCATION COSTS IN NY/NJ**

NY's six counties with the highest number of UACs spend an additional \$319,887,886 each year. Based on an average cost per student of \$25,199 in NYC & \$23,091 in NY state. There were 3,805 UACs in NYC & 9,701 in NY state for a total of 13,506. Source: US Census Annual Survey of School Finance

**Total Increase in Annual Education Cost for NY/NJ is \$450,819,706.**

**Unaccompanied Alien Children Placements FY 2016 - FY 2019**  
Source: Office of Refugee Resettlement Dept. of Homeland Security

State	County	FY2016	FY2017	FY2018	FY2019	Total
NY	Albany County	0	0	0	0	0
NJ	Bergen County	281	259	230	261	1031
NJ	Camden County	73	16	0	88	278
NJ	Essex County	228	228	180	363	999
NJ	Hudson County	267	314	215	282	1180
NJ	Monmouth County	183	243	156	201	783
NJ	Millisec County	187	139	113	135	565
NJ	Monmouth County	87	85	0	76	348
NJ	Monmouth County	138	144	137	208	627
NJ	Ocean County	0	82	0	51	133
NJ	Somerset County	71	0	0	81	152
NJ	Passaic County	102	88	84	133	377
NJ	Union County	680	489	420	511	2100
NJ	Essex County	200	220	191	281	892
NJ	Dulles County	0	0	0	53	53
NJ	Kings County	441	461	402	540	1844
NJ	Hempstead County	1,278	1,117	1,178	620	4,193
NJ	Orange County	0	30	78	100	208
NJ	Queens County	798	709	873	873	3263
NJ	Rockland County	179	158	138	208	683
NJ	Suffolk County	1,472	1,047	432	855	3,806
NJ	Westchester County	304	225	210	253	992

**New Jersey Congressional Districts**

4<sup>th</sup> – Christopher Smith (R)  
5<sup>th</sup> – Josh Gottheimer (D)  
7<sup>th</sup> – Tom Malinowski (D)  
8<sup>th</sup> – Albio Sires (D)  
9<sup>th</sup> – Bill Pascrell, Jr (D)  
10<sup>th</sup> – Donald Payne (D)  
11<sup>th</sup> – Mike Sherrill (D)  
12<sup>th</sup> – Bonnie Watson Coleman (D)

**Annual Resources Needed From the Federal Government**

**\$451 million**

**25 Congressional Districts**

NY – 1<sup>st</sup>, 2<sup>nd</sup>, 3<sup>rd</sup>, 4<sup>th</sup>, 5<sup>th</sup>, 6<sup>th</sup>, 7<sup>th</sup>, 8<sup>th</sup>, 9<sup>th</sup>, 10<sup>th</sup>, 11<sup>th</sup>, 12<sup>th</sup>, 14<sup>th</sup>, 15<sup>th</sup>, 16<sup>th</sup>, 17<sup>th</sup> & 18<sup>th</sup>.

NJ – 4<sup>th</sup>, 5<sup>th</sup>, 7<sup>th</sup>, 8<sup>th</sup>, 9<sup>th</sup>, 10<sup>th</sup>, 11<sup>th</sup>, & 12<sup>th</sup>.

Over the last four years, 19,786 Unaccompanied Alien Children have been placed in these counties by the Department of Homeland Security, Office of Refugee Resettlement. This increase in school age children causes an annual \$451 million increase in public school costs – \$1.8 billion over four years. Real estate taxes are used to finance public schools and as those taxes increase, the fixed income, elderly home-owners bear the burden. Since the elderly vote at a disproportionately higher level than other demographics, the issue of increased irregular migration and higher public education costs could be an important issue in Congressional races in the future. This information is being shared with these Congressional representatives along with a proposal to address immigration issues.

## New York Home Value\* - 2016 – 2020

\*Zillow Home Value Index

Year	Single Family Residences					
	Bronx County	Queens County	Kings County	Suffolk County	Nassau County	Westchester County
2020	\$322,000	\$536,000	\$670,000	\$542,000	\$563,000	\$642,000
2019	\$293,000	\$532,000	\$673,000	\$532,000	\$559,000	\$637,000
2018	\$271,000	\$496,000	\$642,000	\$511,000	\$527,000	\$644,000
2017	\$254,000	\$464,000	\$597,000	\$481,000	\$495,000	\$607,000
2016	\$240,000	\$428,000	\$570,000	\$465,000	\$472,000	\$602,000

**Zillow Home Value**

Bronx County – <https://www.zillow.com/bronx-county-ny/home-values/>  
Queens County – <https://www.zillow.com/queens-county-ny/home-values/>  
Kings County – <https://www.zillow.com/kings-county-ny/home-values/>  
Suffolk County – <https://www.zillow.com/suffolk-county-ny/home-values/>  
Nassau County – <https://www.zillow.com/nassau-county-ny/home-values/>  
Westchester County – <https://www.zillow.com/westchester-county-ny/home-values/>

**Mar 2021 — Kings County \$50K**  
Average County Tax Rate %  
**0.653%** (Kings County)

**Kings County**  
17.5% increase in real estate tax going from \$3,722 to \$4,375.

**Mar 2021 — Suffolk County \$50K**  
Average County Tax Rate %  
**2.346%** (Suffolk County)

**Suffolk County**  
17% increase in real estate tax going from \$10,909 to \$12,715.

**Mar 2021 — Bronx County \$30K**  
Average County Tax Rate %  
**0.967%** (Bronx County)

**Bronx County**  
34% increase in real estate tax going from \$2,321 to \$3,114.

**Mar 2021 — Nassau County \$54K**  
Average County Tax Rate %  
**2.240%** (Nassau County)

**Nassau County**  
19.3% increase in real estate tax going from \$10,573 to \$12,611.

**Mar 2021 — Queens County \$52K**  
Average County Tax Rate %  
**0.866%** (Queens County)

**Queens County**  
25% increase in real estate tax going from \$3,707 to \$4,642.

**Mar 2021 — Westchester County \$63K**  
Average County Tax Rate %  
**1.973%** (Westchester County)

**Westchester County**  
7% increase in real estate tax going from \$11,878 to \$12,667.

In Florida, five counties have been impacted – Orange, Palm Beach, Broward, Miami-Dade and Lee – with 12,856 Unaccompanied Alien Children placed there since 2016. Total increased cost for education is \$165 million per year. The real estate tax has increased significantly in all five counties.

**Florida Congressional Districts**

7<sup>th</sup> – Stephanie Murphy (D)  
8<sup>th</sup> – Bill Posey (R)  
9<sup>th</sup> – Darren Soto (D)  
10<sup>th</sup> – Val B. Demings (D)  
17<sup>th</sup> – Greg Steube (R)  
18<sup>th</sup> – Brian Mast (R)  
19<sup>th</sup> – Francis Rooney (R)  
20<sup>th</sup> – Alcee L. Hastings (D)  
21<sup>st</sup> – Lois Frankel (D)  
22<sup>nd</sup> – Ted Deutch (D)  
23<sup>rd</sup> – Debbie Wasserman Schultz (D)  
24<sup>th</sup> – Frederica S. Wilson  
25<sup>th</sup> – Mario Diaz-Balart (R)  
26<sup>th</sup> – Debbie Mucarsel-Powell (D)  
27<sup>th</sup> – Donna E. Shalala (D)

**Overall Impact**

12,856 Unaccompanied Alien Children

Increased Annual Education Cost of \$165 million

**FLORIDA**

**Total Increased Cost in Public Education in Counties with Highest Placement of 12,856 UAC is \$165.1 million per year.**

**Orange County**  
School District has 207,283 students – 9<sup>th</sup> largest in the US – with an annual budget of \$3.8 billion with per student cost of \$18,335. Increased education cost of 1,068 UAC students is \$19.6 million.

**Palm Beach**  
School District has 193,000 students – 10<sup>th</sup> largest in the US – with an annual budget of \$3 billion with per student cost of \$15,544. Increased education cost of 4,188 UAC students is \$65.1 million.

**Broward**  
272,504 students – 6<sup>th</sup> largest in the US – with an annual budget of \$2.3 billion with per student cost of \$8,440. Increased education cost of 1,473 UAC students is \$12.5 million.

**Lee**  
94,405 students with an annual budget of \$1.6 billion. Increased education cost of 1,762 UAC students is \$28 million.

**Dade**  
350,040 students with an annual budget of \$3.2 billion with per student cost of \$9,142. Increased education cost of 4,367 UAC students is \$39.9 million.

**Congressional Districts**

- Orange County - 7<sup>th</sup>, 8<sup>th</sup>, 9<sup>th</sup> & 10<sup>th</sup>
- Palm Beach - 18<sup>th</sup>, 20<sup>th</sup>, 21<sup>st</sup> & 22<sup>nd</sup>
- Broward - 20<sup>th</sup>, 22<sup>nd</sup>, 23<sup>rd</sup>, 24<sup>th</sup> & 25<sup>th</sup>
- Dade - 24<sup>th</sup>, 25<sup>th</sup>, 26<sup>th</sup> & 27<sup>th</sup>
- Lee - 17<sup>th</sup>, 19<sup>th</sup> & 25<sup>th</sup>

**Congressional Districts**

15 Districts

7<sup>th</sup>, 8<sup>th</sup>, 9<sup>th</sup>, 10<sup>th</sup>, 17<sup>th</sup>, 18<sup>th</sup>, 19<sup>th</sup>, 20<sup>th</sup>, 21<sup>st</sup>, 22<sup>nd</sup>, 23<sup>rd</sup>, 24<sup>th</sup>, 25<sup>th</sup>, 26<sup>th</sup>, 27<sup>th</sup>

**Annual Resources Needed From the Federal Government**

\$165 million

12,856 Unaccompanied Alien Children with an Increased Annual Education Cost of \$165 million

Note: According to July 16, 2019, testimony from the Acting Secretary of the Department of Homeland Security to the House Oversight and Reform Committee, 300,000 children, primarily from the Northern Triangle have entered the US from Oct. 2018 through June 2019 and only 80,000 of these children were UAC. This means there could be significantly more children in Northern Triangle destination cities in the US.

Over the last four years, 12,856 Unaccompanied Alien Children have been placed in these counties by the Department of Homeland Security, Office of Refugee Resettlement. This increase in school age children causes an annual \$165 million increase in public school costs -- \$0.66 billion over four years. Real estate taxes are used to finance public schools and as those taxes increase, the fixed income, elderly home-owners bear the burden. Since the elderly vote at a disproportionately higher level than other demographics, the issue of increased irregular migration and higher public education costs could be an important issue in Congressional races in the future. This information is being shared with these Congressional representatives along with a proposal to address immigration issues.

## Florida Home Value\* 2016 – 2020

\*Zillow Home Value Index

Year	Single Family Residences				
	Orange County	Palm Beach County	Broward County	Lee County	Miami-Dade County
2020	\$270,000	\$298,000	\$285,000	\$241,000	\$319,000
2019	\$263,000	\$291,000	\$278,000	\$240,000	\$315,000
2018	\$242,000	\$278,000	\$261,000	\$233,000	\$296,000
2017	\$222,000	\$263,000	\$244,000	\$228,000	\$280,000
2016	\$206,000	\$246,000	\$225,000	\$215,000	\$258,000

**Palm Beach County**  
1.118% increase in real estate tax going from \$2,750 to \$3,332.

**Orange County**  
1.013% increase in real estate tax going from \$2,087 to \$2,735.

**Broward County**  
1.120% increase in real estate tax going from \$2,520 to \$3,192.

**Miami-Dade County**  
1.039% increase in real estate tax going from \$2,961 to \$3,314.

**Lee County**  
0.974% increase in real estate tax going from \$2,094 to \$2,347.

**Zillow Home Value**

Orange County – <https://www.zillow.com/orange-county-fl/home-values/>

Palm Beach County – <https://www.zillow.com/palm-beach-county-fl/home-values/>

Broward County – <https://www.zillow.com/broward-county-fl/home-values/>

Lee County – <https://www.zillow.com/lee-county-fl/home-values/>

Miami - Dade County – <https://www.zillow.com/miami-dade-county-fl/home-values/>

In the Washington Metropolitan Area, seven counties and DC have been impacted – Arlington, Fairfax, Loudon counties in Virginia and Montgomery and Prince Georges counties in Maryland -- with 17,022 Unaccompanied Alien Children placed there since 2016. Total increased cost for education is \$291 million per year. The real estate tax has increased significantly in all these counties and DC.

**Virginia Congressional Districts**

1<sup>st</sup> – Rob Wittman (R)

8<sup>th</sup> – Donald S. Beyer, Jr. (D)

11<sup>th</sup> – Gerry E. Connolly (D)

**Maryland Congressional Districts**

3<sup>rd</sup> – John Sarbanes (D)

4<sup>th</sup> – Anthony Brown (D)

5<sup>th</sup> – Steny H. Hoyer (D)

7<sup>th</sup> – Francis Rooney (R)

8<sup>th</sup> – Alcee L. Hastings (D)

**Washington DC**

Delegate – Eleanor Holmes Norton (D)

### INCREASED EDUCATION COSTS FOR WASHINGTON DC METRO AREA

**Total Increase in Annual Cost of Public Education for Washington DC Metro Area is \$291,258,168 due to placement of 17,022 UACs from FY2016 - FY 2019.**

**Virginia**

Northern Virginia's Increase in Annual Cost due to UAC Placements is \$132,642,944.

**WashDC**

Increase in Annual Cost of Public Education for in Washington DC due to UAC Placements is \$25,863,398.

**Maryland**

Montgomery & Prince George's Counties in Maryland have 7,987 UACs representing an annual cost of \$132,751,826.

**Congressional Districts VA - 1, 8 & 11; MD - 3, 4, 5, 7 & 8; WashDC - 1**

**Overall Impact for Washington DC Area**

17,022 Unaccompanied Alien Children

Increased Annual Cost in Education of \$291 million

Impact on Fairfax County

1,321 UACs

Increased Annual Cost in Education of \$62 million

**Annual Resources Needed From the Federal Government**

Washington DC Metro - \$291 million

Fairfax County \$62 million

**Congressional Districts**

8 District & 1 Delegate Office

VA – 1<sup>st</sup>, 8<sup>th</sup> & 11<sup>th</sup>

MD 3<sup>rd</sup>, 4<sup>th</sup>, 5<sup>th</sup>, 7<sup>th</sup> & 8<sup>th</sup>

Washington DC - 1

State	County	FY2016	FY2017	FY2018	FY2019	Cost per Student	Total Cost per Year
Virginia	Arlington County	363	345	54	176	\$ 19,921.00	\$ 10,717,498.00
	Fairfax County	1322	971	460	1311	\$ 15,293.00	\$ 62,135,459.00
	Loudoun County	271	158	80	248	\$ 20,822.00	\$ 15,762,254.00
	Prince William County	534	382	149	484	\$ 17,208.00	\$ 26,655,192.00
	Alexandria City	189	179	75	216	\$ 19,455.00	\$ 12,820,845.00
Maryland	Manassas City	106	83	0	103	\$ 15,588.00	\$ 4,551,696.00
	Montgomery County	1079	782	356	1165	\$ 16,478.00	\$ 55,728,596.00
	Prince George's County	1420	1056	571	1558	\$ 16,726.00	\$ 77,023,230.00
Washington DC	Washington DC	432	292	134	319	\$ 21,974.00	\$ 25,863,398.00

Over the last four years, 17,022 Unaccompanied Alien Children have been placed in these counties by the Department of Homeland Security, Office of Refugee Resettlement. This increase in school age children causes an annual \$291 million increase in public school costs -- \$1.20 billion over four years. Real estate taxes are used to finance public schools and as those taxes increase, the fixed income, elderly home-owners bear the burden. Since the elderly vote at a disproportionately higher level than other demographics, the issue of increased irregular migration and higher public education costs could be an important issue in Congressional races in the future. This information is being shared with these Congressional representatives along with a proposal to address immigration issues.

## Washington DC Metro Area Home Value\* - 2016 – 2020

\*Zillow Home Value Index

Year	Fairfax County, VA	Loudoun County, VA	Arlington County, VA	Prince William County, VA	Montgomery County, MD	Prince George's County, MD	Washington DC
2016	\$528,000	\$483,000	\$646,000	\$352,000	\$443,000	\$216,000	\$542,000
2017	\$538,000	\$494,000	\$661,000	\$362,000	\$447,000	\$279,000	\$571,000
2018	\$549,000	\$519,000	\$667,000	\$378,000	\$460,000	\$297,000	\$590,000
2019	\$562,000	\$532,000	\$700,000	\$382,000	\$474,000	\$308,000	\$618,000
2020	\$589,000	\$555,000	\$745,000	\$401,000	\$476,000	\$316,000	\$637,000

**Fairfax County, VA**  
Average County Tax Rate 0.9999% (Fairfax County)

**12% increase in real estate tax going from \$5,275 to \$5,884.**

**Arlington County, VA**  
Average County Tax Rate 0.879% (Arlington County)

**15% increase in real estate tax going from \$5,678 to \$6,549.**

**Montgomery County, MD**  
Average County Tax Rate 0.933% (Montgomery County)

**7.5% increase in real estate tax going from \$4,133 to \$4,441.**

**Prince Georges County, MD**  
Average County Tax Rate 1.330% (Prince Georges County)

**46% increase in real estate tax going from \$2,873 to \$4,203.**

**Loudoun County, VA**  
Average County Tax Rate 1.098% (Loudoun County)

**15% increase in real estate tax going from \$5,303 to \$6,094.**

**Prince William County, MD**  
Average County Tax Rate 1.046% (Prince William County)

**14% increase in real estate tax going from \$3,682 to \$4,195.**

Zillow Washington DC Real Estate Price 2016 - \$542,000 -> 2020 \$637,000

Average County Tax Rate 0.545% (District of Columbia County)

The analysis shows that there will be more than a \$1 billion increase annually in education costs for these communities, if real estate taxes continue to increase there could be a political backlash from the elderly demographic against the Democratic position on immigration. With 62 Congressional Districts having a Democratic incumbent out of the 80 districts analyzed, there is a clear need for the Democrats to proactively address the impact of potential increases in migration to US communities by funding and implementing a \$4 billion education support initiative in these school districts or face the loss of close races in future years. Helping public schools in U.S. communities impacted by irregular immigration is good politics.

Post Script – The 2020 House of Representatives election in California’s 25<sup>th</sup> district flipped the seat from Democratic to Republican. The post highlighted turnout of the elderly vote as an important factor. Paying attention to issues like support for public education and preventing real estate tax increases are clearly important as the country potentially moves toward more humane immigration policies. See the last comment on right in the post – “Tracking data shows a significant voting gap along generational lines. Roughly 56% of voters 65 and older returned a mail ballot. Just 19% of those younger than 35 did so.”

2020
Calif. 25th
Live Analysis
Wisc. 7th
Neb. Primary
Neb. Statewide
National Map
Delegate Count
State Results ▾

## California Special Election Results: 25th Congressional District

Mike Garcia, a Republican and a former military pilot, has claimed victory in the race to replace former Representative Katie Hill. Christy Smith, his Democratic opponent, has conceded.

Updated May 16, 2020 82% reporting

Candidate	Party	Votes	Pct.	
<span style="color: white; font-weight: bold;">✓</span> Mike Garcia	Republican	95,088	<b>54.9%</b>	<div style="width: 55%; height: 10px; background: linear-gradient(to right, red, red);"></div>
Christy Smith	Democrat	78,234	<b>45.1</b>	<div style="width: 45%; height: 10px; background: linear-gradient(to right, blue, blue);"></div>

173,322 votes, 338 of 411 precincts reporting

County	Garcia	Smith	Rpt.
Los Angeles	72,382	61,308	79%
Ventura	22,706	16,926	100

Our reporters are providing real-time updates.

**Jennifer Medina** May 13, 2020

Though officials have not yet completed the count in California's special election, Christy Smith has announced she is conceding the race to Mike Garcia. [Read more »](#)

**Jennifer Medina** May 13, 2020

If Garcia indeed wins, expect Democrats to downplay the loss by saying that the special election is too idiosyncratic to draw lessons for the fall.

**Jennifer Medina** May 13, 2020

There is no doubt that a win for Republicans in a state that is overwhelmingly controlled by Democrats would be remarkable.

**Jennifer Medina** May 13, 2020

No matter who wins, expect a rematch in November: both Smith and Garcia plan to run for a full term in the fall.

**Jennifer Medina** May 13, 2020

Tracking data shows a significant voting gap along generational lines. Roughly 56% of voters 65 and older returned a mail ballot. Just 19% of those younger than 35 did so.

8